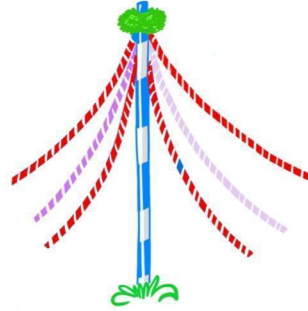


# Maypole School



## Child Protection and Safeguarding Policy

Sunbury

September 2023-2024

Publication Date:		05 Sep 22
Reviewed:	Adrienne Cherrywood	20 July 23 19 Nov 23 25 Feb 24
Next Review due:		Sep 2024
Principal Signature	<i>Adrienne Cherrywood</i>	
Executive Headteacher signature	<i>Kitty Clark</i>	

### Policy Availability and Review

This policy is available on our school website, and on request from the school office. We also inform parents and carers about this policy when their children join our school, and through our school newsletter.

The policy is provided to all staff on Induction, alongside our Staff Code of Conduct, behaviour policy and the safeguarding response to those pupils who are missing from education. In addition, all staff are provided with Part One of the statutory guidance and Annex A ['Keeping Children Safe in Education'](#), DfE (2023).

This policy will be reviewed by the Governing Body on an annual basis. It is next due for review in September 2024

## CONTENTS

<b>Introduction</b>	<b>3</b>
<b>Ethos</b>	<b>3</b>
<b>Roles &amp; responsibilities</b>	<b>5</b>
<b>Safeguarding Training for Staff</b>	<b>9</b>
<b>Procedures for Managing Concerns</b>	<b>10</b>
<b>Types Of Abuse and their symptoms</b>	<b>13</b>
<b>Specific Safeguarding Issues</b>	<b>16</b>
<b>Working With Parents and Carers</b>	<b>22</b>
<b>Child Protection Conferences</b>	<b>23</b>
<b>Safer Recruitment</b>	<b>23</b>
<b>Safer Working Practices</b>	<b>24</b>
<b>Managing Allegations</b>	<b>25</b>
<b>Use Of Premises for Non-School Activities</b>	<b>28</b>
<b>Other Relevant Policies</b>	<b>28</b>
<b>Legal and Statutory Framework</b>	<b>28</b>

## APPENDICES

<b>1. Information Sheet For New Starters, Visitors &amp; Volunteers</b>	<b>30</b>
<b>2. Local Safeguarding Procedures</b>	<b>31</b>
<b>3. Advice For Schools Where There Are Concerns About An Adult Who Works Within The Setting</b>	<b>33</b>
<b>4. Covid-19 Arrangements</b>	<b>34</b>
<b>5. Part One KCSIE 2023</b>	<b>35</b>
<b>6. Annexe A KCSIE 2023 Safeguarding Information for school and college staff</b>	<b>49</b>
<b>7. Annex B Further Information</b>	<b>53</b>

# Introduction

## Purpose and Aims of this Policy

The purpose of Maypole School's safeguarding policy is to ensure every child who is a registered pupil at our school is safe and protected from harm. This means we will always work to:

- Protect children and young people at our school from maltreatment;
- Prevent impairment of our children's and young people's mental and physical health or development;
- Ensure that children and young people at our school grow up in circumstances consistent with the provision of safe and effective care;
- Undertake that role so as to enable children and young people at our school to have the best outcomes.

This policy will give clear direction to all staff including supply staff, volunteers, visitors and parents about expected behaviour and our legal responsibility to safeguard and promote the welfare of all children at our school.

Our school fully recognises the contribution it can make to protect children from harm and supporting and promoting the welfare of all children who are registered pupils at our school. The elements of our policy are prevention, protection and support.

## Our Safeguarding duty to absent pupils

We recognise that our safeguarding responsibilities are clearly linked to our responsibilities for ensuring that appropriate safeguarding responses are in place for children who are absent from school or who go missing from education, particularly on repeat occasions. The teaching staff will regularly liaise with the Designated Safeguarding Lead to discuss all persistently absent pupils and those who go missing to identify the risk of abuse and neglect including sexual abuse or exploitation and to ensure that appropriate safeguarding responses have been put in place to reduce the risk of future harm. Please refer to our absent pupil protocols.

## Who this Policy applies to

This policy applies to all pupils, staff, parents, carers, governors, volunteers and visitors.

# Our Ethos

The child's welfare is of paramount importance, and is therefore central to our ethos. Our school will establish and maintain an ethos where pupils feel secure, are encouraged to talk, are listened to and are safe. Children at our school will be able to talk freely to any member of staff at our school if they are worried or concerned about something. All staff will reassure victims that they are being taken seriously and that they will be supported and kept safe. Victims will never be given the impression that they are creating a problem by reporting abuse, sexual violence or sexual harassment.

## This is everyone's job

Everyone who comes into contact with children and their families has a role to play in safeguarding children. We recognise that staff at our school play a particularly important role as they are in a position to identify concerns early and provide help for children to prevent concerns from escalating. **All staff are advised to maintain an attitude of 'it could happen here' where safeguarding is concerned.** When concerned about the welfare of a child, staff members must always act in the **best interests** of the child.

## **Our approach to Safeguarding**

At Maypole School we ensure that safeguarding and child protection is at the forefront and underpins all relevant aspects of process and policy development. We operate with the best interests of the child at our heart.

Where there is a safeguarding concern, the child's wishes and feelings are taken into account when determining what action to take and what services to provide. The systems we have in place are well promoted, easily understood and easily accessible for children to confidently report abuse, knowing their concerns will be treated seriously, and knowing they can safely express their views and give feedback.

All staff and regular visitors will, through training and induction, know how to recognise indicators of concern, how to respond to a disclosure from a child and how to record and report this information. We will not make promises to any child and we will not keep secrets. Every child will know what the adult will have to do with any information they have chosen to disclose.

## **How the Curriculum is designed to support Safeguarding**

Another reflection of safeguarding being so central to our ethos is that throughout our broad and balanced curriculum, we will provide activities and opportunities for children to develop the knowledge, values and skills they need to identify risks, including knowing when and how to ask for help for themselves and others to stay safe (this includes online). The Relationships Education, Relationships and Sex Education and Health Education will cover relevant topics in an age and stage appropriate way, through a planned, developmental curriculum enabling pupils to learn about their rights and responsibilities to behave and stay safe in a variety of contexts on and offline. This will provide further reinforcement to help children identify risks, know when to seek support and develop the skills to ask for help from trustworthy, reliable sources. Further information can be found in the DfE guidance [‘Teaching online safety in school.’](#) and [‘Relationships Education, Relationships and Sex Education and Health Education.’](#)

The school's Relationships and Sex Education policy can be found on the school's website.

## **Working Together to Safeguard Children**

At all times we will work in partnership and endeavour to establish effective working relationships with parents, carers and colleagues from other agencies in line with [Working Together to Safeguard Children](#) (2022) and the Surrey Safeguarding Children Partnership ([www.surreyscb.org.uk](http://www.surreyscb.org.uk)).

## **Co-ordination of early help when additional needs are identified**

As part of our responsibilities for safeguarding and promoting the welfare of children, we will provide a co-ordinated offer of early help when additional needs of children are identified. These may include if a child:

- is disabled and has specific additional needs;
- has special educational needs (whether or not they have a statutory education, health and care plan);
- has a mental health need;
- is a young carer;
- is showing signs of being drawn in to anti-social or criminal behaviour, including gang involvement and association with organised crime groups;
- is frequently missing/goes missing from care or from home;

- is misusing drugs or alcohol themselves;
- is at risk of modern slavery, trafficking or exploitation;
- is in a family circumstance presenting challenges for the child, such as substance abuse, adult mental health problems or domestic abuse;
- has returned home to their family from care;
- is showing early signs of abuse and/or neglect;
- is at risk of being radicalised or exploited;
- is at risk of 'honour'-based abuse such as Female Genital Mutilation or Forced Marriage;
- is a privately fostered child
- has a family member in prison, or is affected by parental offending;
- is persistently absent from education, including persistent absences for part of the school day.

# Roles and Responsibilities

## Local Authority Contacts

**Surrey Single Point of Access (C-SPA)** – 0300 470 9100 email: [cpsa@surreycc.gov.uk](mailto:cpsa@surreycc.gov.uk)

Out of hours: 01483 517898 email: [edt.ssd@surreycc.gov.uk](mailto:edt.ssd@surreycc.gov.uk)

Emergency duty team if out of hours on 01483 517898

**Local Authority Designated Officer (LADO):**

Telephone: 0300 123 1650 (option 3) / 0772 082 8700 Email: [lado@surreycc.gov.uk](mailto:lado@surreycc.gov.uk)

**Referrals for concerns of radicalisation - the Surrey Police Prevent Team**

Email a referral form to: [preventreferrals@surrey.pnn.police.uk](mailto:preventreferrals@surrey.pnn.police.uk)

**Surrey - North West Inclusion Team - Concerns regarding attendance**

Woking, Surrey Heath and Runnymede Telephone: 01483 518130

**Harmful Sexual Behaviours - Immediate actions**

Professionals should report concerns immediately to Police and Surrey Children's Single Point of Access Monday – Friday 9am-5pm on 0300 470 9100 or Emergency duty team if out of hours on 01483 517898.

The attending Police Officer will complete a Single Combined Assessment of Risk Form (SCARF) for any victims and alleged abusers under 18.

## Maypole School Contacts

Role	Name	Contact details
Designated Safeguarding Lead (DSL)	Craig Reed Assistant Head Teacher	<a href="mailto:creed@maypoleschool.co.uk">creed@maypoleschool.co.uk</a>

Deputy DSL	Kitty Clark Executive Headteacher	<a href="mailto:kclark@maypoleschool.co.uk">kclark@maypoleschool.co.uk</a>
Mental Health Lead & Principal	Adrienne Cherrywood	<a href="mailto:acherrywood@maypoleschool.co.uk">acherrywood@maypoleschool.co.uk</a>
Executive Head Teacher	Kitty Clark	<a href="mailto:kclark@maypoleschool.co.uk">kclark@maypoleschool.co.uk</a>
Named Safeguarding member of Governing Body	Philip Prior	<a href="mailto:governingbody@maypoleschool.co.uk">governingbody@maypoleschool.co.uk</a>
Chair of Governors	Philip Prior	<a href="mailto:governingbody@maypoleschool.co.uk">governingbody@maypoleschool.co.uk</a>

## Responsibility of all Staff, volunteers and visitors

It is the responsibility of **every** member of staff, volunteer and regular visitor to our school to ensure that they carry out the requirements of this policy and, at all times, work in a way that will safeguard and promote the welfare of all of the pupils at this school. This includes the responsibility to provide a safe environment in which children can learn.

## The Governing Body's Responsibilities

The Governing Body of Maypole School oversees the effectiveness of this policy, and our compliance with it and provide scrutiny and challenge to the leadership team.

The Governing Body will ensure that:

- The safeguarding policy is in place and is reviewed annually, is available publicly via our school website and has been written in line with Local Authority guidance and the requirements of the Surrey Safeguarding Children Partnership policies and procedures;
- The school contributes to inter-agency working in line with Working Together to Safeguard Children (2022);
- A senior member of staff from the leadership team is designated to take the lead responsibility for safeguarding and child protection and that there is at least one deputy DSL(s) who is an appropriately trained member to deal with any issues in the absence of the Designated Safeguarding Lead (DSL). There will always be cover for this role. The role will be evidenced explicitly in the role holder's job description.
- All staff receive a safeguarding induction and are provided with a copy of this policy, the staff code of conduct, the behaviour policy and the school's safeguarding response for those pupils who go missing from education as detailed section 7 of this policy.
- All staff undertake appropriate child protection training that is updated annually and on-line safety training.
- All staff will be aware of the school's filtering and monitoring processes to limit pupils access to inappropriate and unsafe internet content.
- All members of the Governing Body will undertake child protection training. Governors will ensure that they and the proprietor are aware of their obligations under the Human Rights Act 1998, the Equality Act 2010 and of their local multi-agency safeguarding arrangements. They will understand the definitions of '**protected characteristics**' and ensure that equality is at the centre of the school's ethos.
- Procedures are in place for dealing with allegations against members of staff and volunteers in line with statutory guidance;

- Safer recruitment practices are followed in accordance with the requirements of ['Keeping Children Safe in Education'](#) DfE (2023);
- They remedy without delay any weakness in regard to our safeguarding arrangements that are brought to their attention.

## **Principal & Executive Headteacher's Reports to Governing Body Meetings**

The governing body will receive a safeguarding report at each meeting that will record the training that has taken place, the number of staff attending and any outstanding training requirements for the school. It will also record all safeguarding activity that has taken place, for example, meetings attended, reports written, training or induction given. It will not identify individual pupils.

## **The Principal/Executive Headteacher's Responsibilities**

The Principal /Executive Headteacher is responsible for:

- Identifying a senior member of staff from the leadership team to be the Designated Safeguarding Lead (DSL);
- Identifying alternate members of staff to act as the Designated Safeguarding Lead (DSL) in his/her absence, to ensure there is always cover for the role;
- Ensuring that the policies and procedures adopted by the governing body, particularly concerning referrals of cases of suspected abuse and neglect, are followed by all staff;
- Ensuring that all staff and volunteers feel able to raise concerns about poor or unsafe practice and such concerns are addressed sensitively in accordance with agreed whistle-blowing procedures;
- Liaison with the LADO in the event of an allegation of abuse being made against a member of staff or volunteer.

## **Designated Safeguarding Lead's (DSL) Responsibilities**

The Designated Safeguarding Lead is a senior member of the School's leadership team, who takes lead responsibility for safeguarding and child protection within our school. The DSL will carry out their role in accordance with the responsibilities outlined in Annex C of ['Keeping Children Safe in Education'](#).

The DSL will provide advice and support to other staff on child welfare and child protection matters. Any concern for a child's safety or welfare will be recorded in writing and given to the DSL.

During term time the designated safeguarding lead and or a deputy will always be available for staff in the school to discuss any safeguarding concerns. If in *exceptional* circumstances, a DSL is not available on the school site in person, we will ensure that they are available via telephone and / or any other relevant media.

The DSL/deputy DSL will represent our school at Child Protection conferences and Core Group meetings. Through appropriate training, knowledge and experience our DSL will liaise with Children's Services and other agencies where necessary, and make referrals of suspected abuse to Children's Services, take part in strategy discussions and other interagency meetings and contribute to the assessment of children.

The DSL will maintain records and child protection files, ensuring that they are kept confidential and stored securely (see section 8 for more information.)

The DSL is responsible for ensuring that all staff members and volunteers are aware of our policy and the procedure they need to follow. They will ensure that all staff, volunteers and regular visitors

have received appropriate child protection information during induction and have been trained within the school.

For children who are care leavers, the DSL will obtain details of the Local Authority Personal Advisor appointed to guide and support each child.

The DSL(s) will work with the senior leaders, taking lead responsibility for promoting educational outcomes by knowing the welfare, safeguarding and child protection issues that children in need are experiencing, or have experienced; and by identifying the impact that these issues might be having on children's attendance, engagement and achievement.

This will include understanding their academic progress and attainment and maintaining a culture of high aspirations for this cohort and supporting teaching staff to provide additional academic support or reasonable adjustments to help children who have or have had a social worker reach their potential.

We recognise that a child's experiences of adversity and trauma can leave them vulnerable to further harm, as well as educationally disadvantaged in facing barriers to attendance, learning, behaviour and mental health.

Regarding children with a social workers, the DSL will use the information that they hold to make decisions in the best interests of the child's safety and welfare, and to help promote educational outcomes. The DSL will ensure that staff know who these children are, understand their academic progress and attainment, and maintain a culture of high aspirations for this cohort; supporting teaching staff to identify the challenges that children in this group might face and the additional academic support and adjustments that they could make to best support these children.



# Safeguarding Training for Staff

## Induction training for new staff

When new staff join our school they will be informed of the safeguarding arrangements in place. They will be given a copy of our school's safeguarding policy along with the staff code of conduct, Part one and Annex A of *'Keeping Children Safe in Education'* and told who our Designated Safeguarding Lead (DSL) and Deputy DSLs are. They will also receive a copy of the behaviour policy and the school's response to children who go missing from education – this information is included in section 7 of this policy. All staff are expected to read these key documents. They will also be provided with information about how to record and report safeguarding concerns. All reports are recorded electronically, and new staff will be shown the process to use during induction.

Every new member of staff or volunteer will receive safeguarding training during their induction period within one week of joining the school. This programme will include information relating to signs and symptoms of abuse, how to manage a disclosure from a child (including reassuring victims that they are being taken seriously and that they will be supported and kept safe), how to record, the processes for referral to Children's Services and the statutory assessments under Section 17 and Section 47 as well as the remit of the role of the Designated Safeguarding Lead (DSL). The training will also include information about whistle-blowing in respect of concerns about another adult's behaviour and suitability to work with children. Staff will also be made aware of the school's filtering systems and the monitoring process. Staff will also receive on-line safety training as this is part of the overarching safeguarding approach of our school.

## Mandatory training for all Staff

In addition to the safeguarding induction, we will ensure that mechanisms are in place to assist staff to understand and discharge their role and responsibilities as set out in Part one of *'Keeping Children Safe in Education'*. In order to achieve this, we will ensure that:

- all members of staff will undertake appropriate safeguarding training on an annual basis and we will evaluate the impact of this training;
- all staff members receive regular safeguarding and child protection updates (for example, via email, e-bulletins, staff meetings), as required, but at least annually, to provide them with relevant skills and knowledge to safeguard children effectively;
- and that daily de-briefing meetings will enable leaders to share information with relevant staff members as appropriate.

## Information for all visitors

All regular visitors, temporary staff and volunteers to our school will be given a set of our safeguarding procedures; they will be informed of who our DSL and Deputy DSL staff members are and what the recording and reporting system is. (See Appendix 2). This is in the form of a laminated poster that is displayed in the lobby and available in hard copy should it be requested.

## Training for DSL, Deputy DSL, and selected senior staff

The DSL, the Deputy DSL and any other senior member of staff who may be in a position of making referrals or attending child protection conferences or core groups will attend one of the multi-agency training courses organised by Surrey School Services and the Surrey Safeguarding Partnership at least once every three years. The DSL and Deputy DSL will attend Designated Safeguarding Lead (DSL) training every two years. In addition to formal training, DSL will ensure that they update their knowledge and skills at regular intervals, but at least annually, to keep up with any developments relevant to their role. The relevant members of staff will attend DSL forum meetings and Local

Safeguarding Children's Groups throughout the year and will disseminate relevant information to the school team.

## **Training for members of the governing body**

Our governing body will also undertake appropriate training to ensure they are able to carry out their duty to safeguard all of the children at our school. Training for the Governing Body member to support them in their safeguarding role will be undertaken on appointment and annually.

## **Keeping up to date**

We actively encourage all of our staff to keep up to date with the most recent local and national safeguarding advice and guidance. Annex A of '*Keeping Children Safe in Education*' (2023) provides links to guidance on specific safeguarding issues such as Child Sexual Exploitation and Female Genital Mutilation. In addition, local guidance can be accessed via Surrey Safeguarding Children Partnership.

The school will ensure that all staff are kept up to date with specific issues as above.

# Procedures for Managing Concerns

## **Surrey Safeguarding Children Partnership**

Maypole School adheres to child protection procedures that have been agreed locally through the Surrey Safeguarding Children Partnership.

## **Staff attitude**

Every member of staff including volunteers working with children at our school are advised to maintain an attitude of '*it could happen here*' where safeguarding is concerned. When concerned about the welfare of a child, staff members should always act in the interests of the child and have a responsibility to take action as outlined in this policy.

## **Reporting of Concerns**

All staff are encouraged to report any concerns that they have and not see these as insignificant. On occasions, a referral is justified by a single incident such as an injury or disclosure of abuse. More often however, concerns accumulate over a period of time and are evidenced by building up a picture of harm over time; this is particularly true in cases of emotional abuse and neglect. In these circumstances, it is crucial that staff record and pass on concerns in accordance with this policy immediately to allow the DSL to build up a picture and access support for the child at the earliest opportunity. A reliance on memory without accurate and contemporaneous records of concern could lead to a failure to protect.

It is **not** the responsibility of school staff to investigate welfare concerns or determine the truth of any disclosure or allegation. All staff, however, have a duty to recognise concerns and pass the information on in accordance with the procedures outlined in this policy.

## **Who to report a concern to**

The Designated Safeguarding Lead (DSL) should be used as a first point of contact for concerns and queries regarding any safeguarding concern in our school. Any member of staff or visitor to the school who receives a disclosure of abuse or suspects that a child is at risk of harm must report it immediately to the DSL or, if unavailable, to the Deputy DSL. In the absence of either of the above, the matter should be brought to the attention of the most senior member of staff.

## How to complete a “Cause for Concern” form

All concerns about a child or young person should be reported **without delay** and recorded on CPOMS highlighting the **Cause for Concern** and alerting relevant staff to the record . Records should include:

- a clear and comprehensive summary of the concern
- details of how the concern was followed up and resolved
- a note of any action taken, decisions reached and the outcome

## Action by the DSL

Following receipt of any information raising concern, the DSL will consider what action to take and seek advice from the Surrey Single Point of Access (SPA) as required. All information and actions taken, including the reasons for any decisions made, will be fully documented.

All referrals will be made in line with Surrey Children’s Services procedures as outlined in Appendix 3.

## What to do if there is a risk of immediate serious harm to a child

If, at any point, there is a risk of immediate serious harm to a child a referral should be made to Surrey Single Point of Access (SPA) immediately or directly to the police. Anybody can make a referral in these circumstances. If the child’s situation does not appear to be improving the staff member with concerns should press for re-consideration by raising concerns again with the DSL / Deputy DSL. Concerns should always lead to help for the child at some point.

Staff should always follow the reporting procedures outlined in this policy in the first instance. However, they may also share information directly with Surrey Children Services, or the police if:

- the situation is an emergency and the DSL/Deputy DSL or other senior leaders are unavailable.
- they are convinced that a direct report is the only way to ensure the pupil’s safety.

## If you feel that concerns about a child have not been responded to appropriately

Any member of staff who does not feel that concerns about a child have been responded to appropriately and in accordance with the procedures outlined in this policy should raise their concerns with the Chair of Maypole’s Governing Body.

If any member of staff does not feel the situation has been addressed appropriately at this point they should contact Surrey Children Services directly with their concerns.

## Concerns that do not meet the harm threshold

The section is based on ‘Section 2: Concerns that do not meet the harm threshold’ in part 4 of Keeping Children Safe in Education.

This section applies to all concerns (including allegations) about members of staff, including supply teachers, volunteers and contractors, which do not meet the harm threshold set out in section 1 above.

Concerns may arise through, for example:

- Suspicion

- Complaint
- Safeguarding concern or allegation from another member of staff
- Disclosure made by a child, parent or other adult within or outside the school
- Pre-employment vetting checks

We recognise the importance of responding to and dealing with any concerns in a timely manner to safeguard the welfare of children.

## **Definition of low-level concerns**

The term 'low-level' concern is any concern – no matter how small – that an adult working in or on behalf of the school may have acted in a way that:

- Is inconsistent with the staff code of conduct, including inappropriate conduct outside of work, **and**
- Does not meet the allegations threshold or is otherwise not considered serious enough to consider a referral to the designated officer at the local authority

Examples of such behaviour could include, but are not limited to:

- Being overly friendly with children
- Having favourites
- Taking photographs of children on their mobile phone
- Engaging with a child on a one-to-one basis in a secluded area or behind a closed door
- Humiliating pupils

## **Sharing low-level concerns**

We recognise the importance of creating a culture of openness, trust and transparency to encourage all staff to confidentially share low-level concerns so that they can be addressed appropriately.

We will create this culture by:

- Ensuring staff are clear about what appropriate behaviour is, and are confident in distinguishing expected and appropriate behaviour from concerning, problematic or inappropriate behaviour, in themselves and others
- Empowering staff to share any low-level concerns
- Empowering staff to self-refer
- Addressing unprofessional behaviour and supporting the individual to correct it at an early stage
- Providing a responsive, sensitive and proportionate handling of such concerns when they are raised
- Helping to identify any weakness in the school's safeguarding system

At Maypole School we promote a transparent and open culture by providing opportunities for staff to discuss and share both good and bad practice. We hold daily debriefs as a staff collective at the end of the school day where we work together to share strategies for unresolved issues, talk about physical interventions and incidents, and promote examples of working excellence and share successes.

The Principal and Executive Headteacher as the line managers of the school staffing team, take an 'open door' approach to enable ready access to all members of staff to discuss concerns about any aspect of a colleagues performance. We also provide a staff code of conduct which outlines expectations and standards of all staff, and this is shared with staff annually and/or upon induction.

## Responding to low-level concerns

If the concern is raised via a third party, the Principal or Executive Headteacher will collect evidence where necessary by speaking:

- Directly to the person who raised the concern, unless it has been raised anonymously
- To the individual involved and any witnesses

The principal or executive headteacher will use the information collected to categorise the type of behaviour and determine any further action, in line with the school's code of conduct. The principal or executive headteacher will be the ultimate decision-maker in respect of all low-level concerns, though they may wish to collaborate with the DSL.

## Record keeping

All low-level concerns will be recorded in writing. In addition to details of the concern raised, records will include the context in which the concern arose, any action taken and the rationale for decisions and action taken.

Records will be:

- Kept confidential, held securely and comply with the DPA 2018 and UK GDPR
- Reviewed so that potential patterns of concerning, problematic or inappropriate behaviour can be identified. Where a pattern of such behaviour is identified, we will decide on a course of action, either through our disciplinary procedures or, where a pattern of behaviour moves from a concern to meeting the harms threshold as described in section 1 of this appendix, we will refer it to the designated officer at the local authority
- Retained at least until the individual leaves employment at the school

Where a low-level concern relates to a supply teacher or contractor, we will notify the individual's employer, so any potential patterns of inappropriate behaviour can be identified.

## References

We will not include low-level concerns in references unless:

- The concern (or group of concerns) has met the threshold for referral to the designated officer at the local authority and is found to be substantiated; and/or
- The concern (or group of concerns) relates to issues which would ordinarily be included in a reference, such as misconduct or poor performance.

# Types of Abuse and their Symptoms

## Physical abuse

Physical abuse may involve hitting, shaking, throwing, poisoning, burning or scalding, drowning, suffocating, or otherwise causing physical harm to a child. Physical harm may also be caused when a parent fabricates the symptoms of, or deliberately induces, illness in a child.

Physical abuse indicators	
Physical indicators	Behavioural indicators
<ul style="list-style-type: none"><li>• Unexplained injuries – bruises / abrasions / lacerations</li><li>• The account of the accident may be vague or may vary from one telling to another</li><li>• Unexplained burns</li></ul>	<ul style="list-style-type: none"><li>• Withdrawn or aggressive behavioural extremes</li><li>• Uncomfortable with physical contact</li><li>• Seems afraid to go home</li></ul>

<ul style="list-style-type: none"> <li>● Regular occurrence of unexplained injuries</li> <li>● Most accidental injuries occur on parts of the body where the skin passes over a bony protrusion.</li> </ul>	<ul style="list-style-type: none"> <li>● Complains of soreness or moves uncomfortably</li> <li>● Wears clothing inappropriate for the weather, in order to cover up</li> <li>● The interaction between the child and their carer</li> </ul>
---	---

## Neglect

Neglect is the persistent failure to meet a child’s basic physical and / or psychological needs, likely to result in the serious impairment of the child’s health or development.

Neglect may involve a parent failing to:

- Provide adequate food, clothing and shelter
- Protect a child from physical and emotional harm or danger
- Ensure adequate supervision (including the use of inadequate care-givers)
- Ensure access to appropriate medical care or treatment
- It may also include neglect of, or unresponsiveness to, a child’s basic emotional needs.

Neglect Indicators	
Physical indicators	Behavioural indicators
<ul style="list-style-type: none"> <li>● Unattended medical need</li> <li>● Underweight or obesity</li> <li>● Recurrent infection</li> <li>● Unkempt, dirty appearance</li> <li>● Smelly</li> <li>● Inadequate / unwashed clothes</li> <li>● Consistent lack of supervision</li> <li>● Consistent hunger</li> <li>● Inappropriately dressed</li> </ul>	<ul style="list-style-type: none"> <li>● Poor social relationships</li> <li>● Indiscriminate friendliness</li> <li>● Poor concentration</li> <li>● Low self-esteem</li> <li>● Regularly displays fatigue or lethargic</li> <li>● Frequently falls asleep in class</li> <li>● Frequent unexplained absences</li> </ul>

## Emotional abuse

Emotional abuse is the persistent emotional maltreatment of a child such as to cause severe and persistent effects on the child’s emotional development, and may involve:

- Conveying to children that they are worthless or unloved, inadequate, or valued only insofar as they meet the needs of another person;
- Imposing age or developmentally inappropriate expectations on children. These may include interactions that are beyond the child’s developmental capability, as well as overprotection and limitation of exploration and learning, or preventing the child participating in normal social interaction;
- Seeing or hearing the ill-treatment of another;
- Serious bullying, causing children frequently to feel frightened or in danger, or the exploitation or corruption of children.

Emotional abuse indicators	
Physical indicators	Behavioural indicators
<ul style="list-style-type: none"> <li>● Poor attachment relationship</li> <li>● Unresponsive / neglectful behaviour towards the child’s emotional needs</li> </ul>	<ul style="list-style-type: none"> <li>● Low self-esteem</li> <li>● Unhappiness; anxiety</li> <li>● Withdrawn; insecure</li> <li>● Attention seeking</li> </ul>

<ul style="list-style-type: none"> <li>● Persistent negative comments about the child</li> <li>● Inappropriate or inconsistent expectations</li> <li>● Self-harm</li> </ul>	<ul style="list-style-type: none"> <li>● Passive or aggressive behavioural extremes</li> </ul>
---	--

## Sexual abuse

Sexual abuse involves forcing or enticing a child or young person to take part in sexual activities, not necessarily involving a high level of violence, whether or not the child is aware of what is happening. The activities may involve physical contact, including assault by penetration (for example rape or oral sex) or non-penetrative acts such as masturbation, kissing, rubbing and touching outside of clothing. They may also include non-contact activities, such as involving children in looking at, or in the production of, sexual images, watching sexual activities, encouraging children to behave in sexually inappropriate ways, or grooming a child in preparation for abuse (including via the internet). Sexual abuse is not solely perpetrated by adult males. Women can also commit acts of sexual abuse, as can other children.

Sexual abuse	
Physical indicators	Behavioural indicators
<ul style="list-style-type: none"> <li>● Sign of blood / discharge on the child's underclothing</li> <li>● Awkwardness in walking / sitting</li> <li>● Pain or itching in the genital area</li> <li>● Bruising, scratching, bites on the inner thighs / external genitalia</li> <li>● Self-harm</li> <li>● Eating disorders</li> <li>● Enuresis / encopresis</li> <li>● Sudden weight loss or gain</li> </ul>	<ul style="list-style-type: none"> <li>● Sexually provocative / proactive behaviour or knowledge that is incompatible with the child's age &amp; understanding</li> <li>● Drawings and / or written work that is sexually explicit</li> <li>● Running away</li> <li>● Substance misuse</li> <li>● Significant devaluing of self</li> <li>● Loss of concentration</li> </ul>

## How to respond to a disclosure of abuse

- Always stop & listen to someone who wants to tell you about incidents or suspicions of abuse, without displaying shock & disbelief.
- Take the child seriously. Always assume that he/she is telling the truth.
- Do not promise confidentiality; you have a duty to refer to the designated senior person for child protection concerns.
- Do reassure and alleviate guilt. For example you could say; "you are not to blame." "You have done the right thing to tell someone."
- Do not ask leading questions. For example, "What did she do next?" (this assumes that she did), or "did he touch your private part".
- In cases where criminal proceedings occur, such questioning can cause evidence to become invalid.
- Do not ask the child to repeat the incident for another member of staff. The child may well have to tell the story again, and to do so repeatedly will cause undue stress.
- End by summarising what has been said and what action has been agreed.
- Be clear about what you intend to do next.
- Discuss your concern/disclosure with the DSL at the school.
- Record carefully what has been said and what actions have been agreed.

# Specific Safeguarding Issues

## The importance of the Context

We recognise that safeguarding incidents and/or behaviours can be associated with factors outside of the school environment and/or can occur between children outside of the school. This is known as contextual safeguarding.

It is key that all school staff understand the definition of contextual safeguarding and consider whether children are at risk of abuse or exploitation in situations outside their families. Through training we will ensure that staff and volunteers are aware that extra-familial harms take a variety of different forms and children can be vulnerable to multiple harms including (but not limited to) sexual exploitation, criminal exploitation, and serious youth violence.

When reporting concerns, staff should include as much information and background detail as possible so the DSL can make a referral with an holistic view of the child. This will allow any assessment to consider all the available evidence and the full context of any abuse.

## Additional safeguarding challenges due to SEND

We recognise that children with special educational needs and/or disabilities (SEND) can face additional safeguarding challenges and these are discussed in staff training. These additional barriers can include:

- assumptions that indicators of possible abuse such as behaviour, mood and injury relate to the child's disability without further exploration;
- children with SEN and disabilities can be disproportionately impacted by things like bullying- without outwardly showing any signs; and
- communication barriers and difficulties in overcoming these barriers.

## Previously Looked After children

We recognise that a previously looked after child potentially remains vulnerable and all staff should have the skills, knowledge and understanding to keep previously looked after children safe. When dealing with looked after children and previously looked after children, it is important that all agencies work together, and prompt action is taken when necessary to safeguard these children, who are a particularly vulnerable group.

## Child Sexual Exploitation (CSE) and Child Criminal Exploitation (CCE)

We train staff to recognise that both CSE and CCE are forms of abuse and both occur where an individual or group takes advantage of an imbalance in power to coerce, manipulate or deceive a child into sexual or criminal activity. Whilst age may be the most obvious, this power imbalance can also be due to a range of other factors including gender, sexual identity, cognitive ability, physical strength, status, and access to economic or other resources. Victims can be exploited even when activity appears consensual and it should be noted exploitation as well as being physical can be facilitated and/or take place online.

We recognise that Child Sexual Exploitation is a form of child sexual abuse and this imbalance of power coerces, manipulates or deceives a child or young person into sexual activity (a) in exchange for something the victim needs or wants, and/or (b) for the financial advantage or increased status of the perpetrator. Child sexual exploitation does not always include physical contact, it can also occur through the use of technology. We understand that some children may not realise they are being exploited e.g. they may believe they are in a genuine romantic relationship.

## “County Lines” exploitation of children



We understand that criminal exploitation of children is a geographically widespread form of harm that is a typical feature of county lines criminal activity. Drug networks or gangs groom and exploit children and young people to carry drugs and money from urban areas to suburban and rural areas, market and seaside towns. Key to identifying potential involvement in county lines are missing episodes, when the victim may have been trafficked for the purpose of transporting drugs.

## **Coercion of children into carrying weapons, and into serious violence**

We understand that children can become trapped by this type of exploitation as perpetrators can threaten victims (and their families) with violence or entrap and coerce them into debt. They may be coerced into carrying weapons such as knives or begin to carry a knife for a sense of protection from harm from others. We will treat these children as victims, understanding that they have been criminally exploited even if the activity appears to be something they have agreed or consented to. We recognise the experience of girls who are criminally exploited can be very different to that of boys and that both boys and girls being criminally exploited may be at higher risk of sexual exploitation.

## **Staff awareness of risk indicators**

Staff are aware of the indicators and risk factors which may signal a child is vulnerable to or involved with serious violent crime. We make reference to the Home Office's [Preventing youth violence and gang involvement](#) and [Criminal exploitation of children and vulnerable adults: county lines](#) guidance for more information.

## **If County Lines risk / involvement is suspected**

If a child is suspected to be at risk of or involved in county lines, a referral to the Surrey Single Point of Access will be made alongside consideration of availability of local services/third sector providers who offer support to victims of county lines exploitation.

## **So-called “honour-based” violence (including Female Genital Mutilation and Forced Marriage)**

We recognise that our staff are well placed to identify concerns and take action to prevent children from becoming victims of Female Genital Mutilation (FGM) and other forms of so-called 'honour-based' violence (HBV) and provide guidance on these issues through our safeguarding training. If staff have a concern regarding a child that might be at risk of HBV, they should inform the DSL who will activate local safeguarding procedures, using existing national and local protocols for multi-agency liaison with police and children's social care.

Where FGM has taken place, since 31 October 2015 there has been a mandatory reporting duty placed on teachers. [Section 5B of the Female Genital Mutilation Act 2003](#) (as inserted by section 74 of the Serious Crime Act 2015) places a statutory duty upon teachers in England and Wales, to report to the police where they discover (either through disclosure by the victim or visual evidence) that FGM appears to have been carried out on a girl under 18. Those failing to report such cases will face disciplinary sanctions. We will provide guidance and support to our teachers on this requirement and further information on when and how to make a report can be found in the following Home Office guidance: [Mandatory Reporting of Female Genital Mutilation- procedural information](#) Home Office (December 2015)

## **Forced marriage – which is a crime**

We recognise that forcing a person into a marriage is a crime in England and Wales. A forced marriage is one entered into without the full and free consent of one or both parties where violence, threats or any other form of coercion is used to cause a person to enter into a marriage. Threats can be physical or emotional and psychological. The Forced Marriage Unit has [statutory guidance](#) and [Multi-agency guidelines](#) and can be contacted for advice or more information: Contact 020 7008 0151 or email [fm@fco.gov.uk](mailto:fm@fco.gov.uk)

Since February 2023 it has also been a crime to carry out any conduct whose purpose is to cause a child to marry before their eighteenth birthday, even if violence, threats or another form of coercion are not used. As with the existing forced marriage law, this applies to non-binding, unofficial 'marriages' as well as legal marriages.

## **Preventing radicalisation and extremism**

We recognise that safeguarding against radicalisation and extremism is no different to safeguarding against any other vulnerability in today's society. At Maypole School, we will ensure that:

- Through training, staff, volunteers and governors have an understanding of what radicalisation and extremism is, why we need to be vigilant in school and how to respond when concerns arise.
- There are systems in place for keeping pupils safe from extremist material when accessing the internet in our school by using effective filtering and usage policies.
- The DSL has received Prevent training and will act as the point of contact within our school for any concerns relating to radicalisation and extremism.
- The DSL will make referrals in accordance with Surrey Safeguarding procedures and will represent our school at Channel meetings as required.
- Through our curriculum, we will promote the spiritual, moral, social and cultural development of pupils.

## **Child on child abuse: Child on child sexual violence and sexual harassment**

All staff are trained so that they are aware that safeguarding issues can manifest themselves via child on child abuse. This is most likely to include, but may not be limited to:

- bullying (including cyberbullying);
- physical abuse such as hitting, kicking, shaking, biting, hair pulling, or otherwise causing physical harm;
- sexual violence and sexual harassment;
- upskirting;
- sexting (also known as youth produced sexual imagery); and
- initiation/hazing type violence and rituals.

We recognise that children are vulnerable to physical, sexual and emotional abuse by their peers or siblings. Abuse perpetrated by children can be just as harmful as that perpetrated by an adult, so it is important that all staff and volunteers remember the impact on both the victim of the abuse as well as to focus on the support for the child or young person exhibiting the harmful behaviour. We understand that abuse can occur in intimate personal relationships between peers; and that consensual and non-consensual sharing of nudes and semi-nude images and or videos<sup>1</sup> (also known as sexting or youth produced sexual imagery) is a form of child on child abuse.

## **No reports of abuse doesn't mean it is not happening**

We understand, that even if there are no reports in our setting it does not mean it is not happening, it may be the case that it is just not being reported. We recognise that pupils may not find it easy to tell staff about their abuse and can show signs or act in ways that they hope adults will notice and react to. In some cases, the victim may not make a direct report, and this may come from a friend or a conversation that is overheard.

---

<sup>1</sup> UKCIS guidance: [Sharing nudes and semi-nudes advice for education settings](#)

Such abuse will always be taken as seriously as abuse perpetrated by an adult and the same safeguarding children procedures will apply in respect of any child who is suffering or likely to suffer significant harm.

## **We will never tolerate or dismiss concerns**

Staff must never tolerate or dismiss concerns relating to child on child abuse; it must never be tolerated or passed off as 'banter', 'just having a laugh', 'play fighting' or 'part of growing up'. Doing this can lead to a culture of unacceptable behaviours, an unsafe environment for children and in worst case scenarios a culture that normalises abuse leading to children accepting it as normal and not coming forward to report it.

All staff will reassure victims that they are being taken seriously and that they will be supported and kept safe. Victims will never be given the impression that they are creating a problem by reporting abuse, sexual violence or sexual harassment. Nor will a victim ever be made to feel ashamed for making a report.

All staff will understand that they should follow our safeguarding procedures for reporting a concern if they are worried about child on child abuse. The DSL will respond to any concerns related to child on child abuse in line with guidance outlined in Part five of '*Keeping Children Safe in Education*' and '[Sexual violence and sexual harassment between children in schools and colleges](#)' (2023). We will ensure that all concerns, discussions and decisions reached are clearly recorded and any identified actions are followed up.

## **Working with the Police and other agencies**

We will work with other agencies including the police and Children's Social Care, as required to respond to concerns about sexual violence and harassment. We will seek consultations where there are concerns or worries about developmentally inappropriate or harmful sexual behaviour from the Harmful Sexual Behaviour (HSB) Team as required so that we ensure we are offering the right support to the child(ren).

Support will depend on the circumstances of each case and the needs of the child, it may include completion of risk assessments to support children to remain in school whilst safeguarding other children and the victim, delivery of early intervention in respect of HSB and/or referral to the Surrey Single Point of Access..

## **Modern Slavery**

We understand that modern slavery encompasses human trafficking and slavery, servitude and forced or compulsory labour. Exploitation can take many forms, including sexual exploitation, forced labour, slavery, servitude, forced criminality and the removal of organs. We refer to the DfE guidance [Modern slavery: how to identify and support victims](#) for concerns of this nature.

## **Procedure when children are absent or missing from education**

All staff should be aware of the safeguarding responsibilities for children who are missing education, particularly on repeat occasions, to help identify the risk of abuse and neglect, including sexual abuse or exploitation, and to help prevent the risks of their going missing in future.

We adhere to the following procedures and processes to ensure there is an appropriate safeguarding response to children who go missing:

- An attendance register is taken at the start of the first session of each school day and once at the start of the afternoon session;
- We make every effort to contact parents and carers and follow up with the emergency contacts held;

- We hold at least two emergency contact numbers for each of the pupils on our roll wherever possible.
- Staff will alert DSLs to any concerns raised regarding children who are absent from school;
- The DSLs will meet regularly with key members of the school team to ensure that each response is thorough and takes into account all the relevant information about individual children;
- We will follow the procedures outlined in our attendance policy including undertaking first day calling and monitoring data to ensure we intervene early in cases of poor attendance and/or unexplained absences.
- When removing a child from roll at the standard and non-standard transition points, we will inform the Local Authority in accordance with statutory requirements and pass on all safeguarding files.
- We understand that being vigilant and responding to absences early can prevent escalation to children missing education.
- If a pupil is LAC or on a CP plan, the social worker will be contacted on day one of the absence if the parent/carer cannot be contacted.

In the event that the school is unable to contact the parent/carer or any of the emergency contact numbers, a home visit on day two of the absence will be conducted. If there is still no contact, a referral will be made to Children's Social Care services.

## **Mental Health problems as a potential indicator of abuse**

All staff are made aware, through training, that mental health problems can, in some cases, be an indicator that a child has suffered or is at risk of suffering abuse, neglect or exploitation. Our staff are well placed to observe children day-to-day and identify those whose behaviour suggests that they may be experiencing a mental health problem or be at risk of developing one.

We understand that where children have suffered abuse and neglect, or other potentially traumatic adverse childhood experiences, this can have a lasting impact throughout childhood, adolescence and into adulthood. Therefore, through training, staff are aware of how children's experiences can impact on their mental health, behaviour and education. All staff are aware that if they have a mental health concern about a child that is *also* a safeguarding concern, they should take immediate action by passing the information on to a Designated Safeguarding Lead.

We have a named Mental Health Lead. There are clear systems and processes in place for identifying possible mental health problems and work with other agencies as required to respond to these concerns. Designated Safeguarding Leads make reference to the [Mental Health and Behaviour in Schools' DfE guidance for further support](#).

## **Online Safety and potential abuse**

At Maypole School all staff are aware that technology is a significant component in many safeguarding and wellbeing issues. Children are at risk of abuse online as well as face to face. We understand that in many cases abuse will take place concurrently via online channels and in daily life. We know that children can also abuse their peers online, this can take the form of abusive, harassing, and misogynistic messages, the non-consensual sharing of indecent images, especially around chat groups, and the sharing of abusive images and pornography.

As part of the requirement for staff to undergo regular updated safeguarding training, online safety training is also delivered, We will ensure online safety is a running and interrelated theme throughout the curriculum and is reflected in relevant policies, teacher training, the role and responsibilities of the designated safeguarding lead and any parental engagement. Staff training includes understanding roles and responsibilities in relation to filtering and monitoring.

More details can be found in our policies on Online Safety and Mobile and Smart Technology which consider the 4Cs: content, contact, conduct and commerce.

We recognise that technology, and risks and harms related to the internet evolve and change rapidly. Therefore, we carry out an annual review of our filtering systems and our approach to online safety, supported by a risk assessment (on at least an annual basis) that considers and reflects the risks that children face in our setting.

## Cybercrime

We understand that cybercrime is a criminal activity committed using computers and/or the internet. It is broadly categorised as either 'cyber-enabled' (crimes that can happen off-line but are enabled at scale and at speed on-line) or 'cyber dependent' (crimes that can be committed only by using a computer).

If there are concerns about a child in this area, the designated safeguarding lead will consider a referral to the [Cyber Choices programme](#) which aims to intervene where young people are at risk of committing, or being drawn into, low level cyber-dependent offences and divert them to a more positive use of their skills and interests. It aims to intervene where young people are at risk of committing, or being drawn into, low level cyber-dependent offences and divert them to a more positive use of their skills and interests.

## Children with SEND or physical health issues

At Maypole School we recognise that children with special educational needs or disabilities (SEND) or certain health conditions can face additional safeguarding challenges such as

- assumptions that indicators of possible abuse such as behaviour, mood and injury relate to the child's condition without further exploration;
- these children being more prone to peer group isolation or bullying (including prejudice-based bullying) than other children;
- the potential for children with SEND or certain medical conditions being disproportionately impacted by behaviours such as bullying, without outwardly showing any signs; and
- communication barriers and difficulties in managing or reporting these challenges.

We work to address these additional challenges and consider extra pastoral support and attention for these children, along with ensuring any appropriate support for communication is in place.

We also recognise that pupils who attend Maypole School will often have complex needs and due to this we are aware of the additional risk of harm these children may be vulnerable to.

## Records of Concerns

If staff are concerned about the welfare or safety of any child at our school, they will record their concern on the agreed reporting form through our electronic system. Any concerns should be passed to the DSL without delay.

Any information recorded will be kept in a separate named file, and not with the child's academic file. These files will be the responsibility of the DSL. Child protection information will only be shared within school on the basis of 'need to know in the child's interests' and on the understanding that it remains strictly confidential.

Child protection information will be kept up to date. Each concern logged will include:

- a clear and comprehensive summary of the concern;
- details of how the concern was followed up and resolved;
- a note of any action taken, decisions reached and the outcome.

Records of concern, copies of referrals, invitations to child protection conferences, core groups and reports will be stored on the child's CP file. All our safeguarding records will include; a chronology, contents front cover and will record significant events in the child's life.

## **Information sharing when a child leaves our School**

When a child leaves our school, (including in-year transfers) the DSL will make contact with the DSL at the new school and will ensure that the child protection file is forwarded to the receiving school. This will be within 5 days for an in-year transfer or within the first 5 days of the start of a new term. We recognise that not providing information as per the timescales can impact on the child's safety, welfare and educational outcomes.

We will retain evidence to demonstrate how the file has been transferred; this may be in the form of a written confirmation of receipt from the receiving school and/or evidence of recorded delivery.

Prior to a child leaving we will consider if it would be appropriate to share any additional information with the new school or college in advance to help them put in place the right support to safeguard this child.

Where a parent elects to remove their child from the school roll to home educate, the school will make arrangements to pass any safeguarding concerns to the Inclusion and Education Welfare Service within Surrey or the Local Authority where the child resides.

# **Working with Parents and Carers**

## **Informing new Parents / Carers of our Safeguarding Policy and duty**

Maypole School is committed to working in partnership with parents/carers to safeguard and promote the welfare of children and to support them to understand our statutory responsibilities in this area.

When new pupils join our school, parents and carers will be informed that we have a safeguarding policy. A copy will be provided to parents on request and is available on the school website. Parents and carers will be informed of our legal duty to assist our colleagues in other agencies with child protection enquiries and what happens should we have cause to contact Surrey's Single Point of Access.

## **How we will work with Parents / Carers**

We are committed to working with parents positively, openly and honestly. We ensure that all parents are treated with respect, dignity and courtesy. We respect parents' rights to privacy and confidentiality and will not share sensitive information unless we have permission, or it is necessary to do so in order to safeguard a child from harm.

We will seek to share with parents any concerns we may have about their child *unless* to do so may place a child at increased risk of harm. A lack of parental engagement or agreement regarding the concerns the school has about a child will not prevent the DSL making a referral to Surrey's Single Point of Access in those circumstances where it is appropriate to do so.

## **Information we need from Parents / Carers**

In order to keep children safe and provide appropriate care for them, the school requires parents to provide accurate and up to date information regarding:

- Full names and contact details of all adults with whom the child normally lives;
- Full names and contact details of all persons with parental responsibility (if different from above);
- Emergency contact details (if different from above);

- Full details of any other adult authorised by the parent to collect the child from school (if different from the above).

The School will retain this information on the pupil school file. The school will only share information about pupils with adults who have parental responsibility for a pupil or where a parent has given permission and the school has been supplied with the adult's full details in writing.

## **Domestic Violence, and our duty to work with the Local Authority**

At Maypole School we will work in partnership with Surrey Police <https://www.surrey.police.uk/> and Surrey Children's Services to identify and provide appropriate support to pupils who have experienced domestic violence in their household; this scheme is called Operation Encompass. In order to achieve this, Surrey Multi-Agency Safeguarding Hub will share police information of all domestic incidents where one of our pupils has been present with the Designated Safeguarding Lead(s). On receipt of any information, the Designated Safeguarding Lead will decide on the appropriate support the child requires; this could be silent or overt. We will record this information and store this information in accordance with the record keeping procedures outlined in this policy.

## **Child Protection Conferences**

Children's Services will convene a Child Protection conference once a child protection enquiry under Section 47 of the Children Act 1989 has been undertaken and the child is judged to be at continuing risk of significant harm. A review conference will take place once a child has been made the subject of a Child Protection Plan, in order to monitor the safety of the child and the required reduction in risk.

### **Staff attendance at Child Protection Conferences**

Staff members may be asked to attend a child protection conference or core group meetings on behalf of the school in respect of individual children. Usually the person representing the school at these meetings will be the Principal or executive headteacher or DSL. In any event, the person attending will need to have as much relevant up to date information about the child as possible; any member of staff may be required to contribute to this process.

### **Preparing Reports for these conferences**

All reports for child protection conferences will be prepared in advance using the guidance provided by the Surrey Safeguarding Children Partnership. The information contained in the report will be shared with parents before the conference as appropriate and will include information relating to the child's physical, emotional and intellectual development and the child's presentation at school. In order to complete such reports, all relevant information will be sought from staff working with the child in school.

### **Working in partnership with our parents / carers**

Clearly child protection conferences can be upsetting for parents. We recognise that we are likely to have more contact with parents than other professionals involved. We will work in an open and honest way with any parent whose child has been referred to Children's Services or whose child is subject to a child protection plan. Our responsibility is to promote the protection and welfare of all children and our aim is to achieve this in partnership with our parents.

## **Safer Recruitment**

### **Safer Recruitment Policy**

Maypole School's full Safer Recruitment procedures are in our Safer Recruitment and Selection Policy, which must be read in conjunction with this Policy. However, a summary of the key points is as below.

## **Safer Recruitment training**

We will ensure that the Principal & Executive Headteacher and the HR & Office Manager have completed appropriate safer recruitment training. At all times the Principal, Executive Headteacher & HR & Office Manager will ensure that safer recruitment practices are followed in accordance with the requirements of *'Keeping Children Safe in Education'*, DfE (2023). At least one person involved in conducting an interview will have received safer recruitment training.

### **Purpose of Safer Recruitment**

We will use the recruitment and selection process to deter and prevent people who are unsuitable to work with children from applying for or securing employment, or volunteering opportunities.

### **Our staff recruitment process**

We require details of a candidate's present (or last) employment and reason for leaving; full employment history, (since leaving school, including education, employment and voluntary work) including reasons for any gaps in employment and evidence of original academic certificates. We do not accept testimonials and insist on taking up references prior to interview. We will question the contents of application forms if we are unclear about them, and shortlisted candidates will be asked to complete a self-declaration of their criminal record or information that would make them unsuitable to work with children.

We use a range of selection techniques to identify the most suitable person for the post. Structured questions are agreed by the interview panel and any potential areas of concern are explored to determine the applicant's suitability to work with children.

### **DBS and other pre-employment checks**

We will undertake Disclosure and Barring Service checks and other pre-employment checks as outlined in *'Keeping Children Safe in Education'* to ensure we are recruiting and selecting the most suitable people to work with our children.

### **Single Central Register**

We will maintain a Single Central Register (SCR) of all safer recruitment checks carried out in line with statutory requirements. A senior member of staff will check the SCR regularly to ensure that it meets statutory requirements.

### **Importance of continuous vigilance**

We recognise that safer recruitment is not just about carrying out the right DBS checks and is not limited to recruitment procedures. Therefore, we understand the importance of continuous vigilance, maintaining an environment that deters and prevents abuse and challenges inappropriate behaviour. Further information about all of these processes can be found in our Safer Recruitment and Selection policy.

# Safer Working Practice

## **Our Duty of Care**

All adults who come into contact with our children have a duty of care to safeguard and promote their welfare. There is a legal duty placed upon us to ensure that all adults who work with or on behalf of our children are competent, confident and safe to do so.

## **Staff Handbook and Code of Conduct, and Physical Intervention policies**

All staff will be provided with a copy of our school's code of conduct at induction. They will be expected to know our school's Code of Conduct and policy for positive handling/physical intervention and carry out their duties in accordance with this advice. There will be occasion when some form of physical contact is inevitable, for example if a child has an accident or is hurt or is in a



situation of danger to themselves or others around them. However, at all times the agreed policy for safe restraint must be adhered to.

If staff, visitors, volunteers or parent helpers are working with children alone they will, wherever possible, be visible to other members of staff. They will be expected to inform another member of staff of their whereabouts in school, who they are with and for how long. Doors, ideally, should have a clear glass panel in them and be left open where possible.

## Further Guidance

Guidance about acceptable conduct and safe practice will be given to all staff and volunteers during induction. These are sensible steps that every adult should take in their daily professional conduct with children. This advice can be found in '[Guidance for Safer Working Practices for Adults who work with Children and Young People in Education Settings](#)' (2022). All staff and volunteers are expected to carry out their work in accordance with this guidance and will be made aware that failure to do so could lead to disciplinary action.

# Managing allegations against staff & volunteers

## Allegations that may meet the “harms threshold”

Our aim is to provide a safe and supportive environment which secures the wellbeing and very best outcomes for the children at our school. But we do recognise that sometimes the behaviour of adults may lead to an allegation of abuse being made.

Allegations sometimes arise from a differing understanding of the same event, but when they occur, they are distressing and difficult for all concerned. We also recognise that many allegations are genuine and there are some adults who deliberately seek to harm or abuse children.

We work to the thresholds for harm as set out in '*Working Together to Safeguard Children*' (2022) and '*Keeping Children Safe in Education*', DfE (2023) below. An allegation may relate to a person who works / volunteers with children who has:

- behaved in a way that has harmed a child, or may have harmed a child and/or;
- possibly committed a criminal offence against or related to a child and/or;
- behaved towards a child or children in a way that indicates he or she may pose a risk of harm to children; and/or
- behaved or may have behaved in a way that indicates they may not be suitable to work with children.

The 4<sup>th</sup> bullet point above recognises circumstances where a member of staff (including supply teachers) or volunteer is involved in an incident outside of school which did not involve children but could have an impact on their suitability to work with children; this is known as transferrable risk.

## Our responsibility to report / refer allegations or behaviours of concern and / or harm

We recognise our responsibility to report / refer allegations or behaviours of concern and / or harm to children by adults in positions of trust who are not employed by the School to the LADO service directly at [lado@surreycc.gov.uk](mailto:lado@surreycc.gov.uk). These are adults such as those in the voluntary sector, taxi drivers, escorts, and fosters carers.

We will take all possible steps to safeguard our children and to ensure that the adults in our school are safe to work with children. When concerns arise, we will always ensure that the procedures outlined in Part 4 of '*Keeping Children Safe in Education*', DfE (2021) are adhered to and will seek

appropriate advice. The first point of contact for schools regarding concerns and/ or allegation issues (including for supply teachers) is via the Local Authority Designated Officer on **0300 123 1650 (option 3)**. Following advice, the LADO referral form should be completed and sent to [lado@surreycc.gov.uk](mailto:lado@surreycc.gov.uk).

*See Appendix 4 for further details.*

## **What to do if an allegation is made, or information is received**

If an allegation is made or information is received about **any** adult who works/ volunteers in our setting which indicates that they may be unsuitable to work / volunteer with children, the member of staff receiving the information should inform the Principal/Principal or executive headteacher immediately. This includes concerns relating to agency and supply staff and volunteers.

Should an allegation be made against the Principal/Principal or executive headteacher, this will be reported to the Chair of Governors, and the Local Authority Designated Officer on **0300 123 1650 (option 3)** will be contacted. Following advice, the LADO referral form should be completed and sent to [LADO@surreycc.gov.uk](mailto:LADO@surreycc.gov.uk).

In the event that neither the Principal/Principal or executive headteacher nor Chair of Governors is contactable on the day an allegation is made, the information must be passed to and dealt with by a senior member of the staff team.

The Principal/Principal or executive headteacher or Chair of Governors will seek advice from the LADO within one working day. No member of staff or the governing body will undertake further investigations before receiving advice from the LADO.

## **Allegations against / involving Agency staff**

When using a supply agency, we inform the agency of our process for managing allegations against staff and keep them up to date with any policy developments. Where concerns are raised about an individual and the school is not their employer, we recognise that we still have responsibility to ensure allegations are dealt with properly. In order to achieve this, we will liaise with relevant parties including the LADO to determine a suitable outcome. Whilst the supply agency should be fully involved and co-operate with any enquiries from the LADO, police and/or children's services, we recognise that Maypole School will usually take the lead in conducting an investigation as we have direct access to any affected children and other school staff to collect the facts.

## **What staff should do if they do not feel confident about raising their concerns**

Any member of staff or volunteer who does not feel confident to raise their concerns with the Principal/Principal or executive headteacher or Chair of Governors should contact the LADO directly via email to [LADO@surreycc.gov.uk](mailto:LADO@surreycc.gov.uk)

## **Where to find further information and guidance**

Further information and guidance, forms, leaflets and the Allegations against Persons who Work/Volunteer with Children Procedures are found on the [www.surreyscp.org.uk](http://www.surreyscp.org.uk). Further national guidance can be found at: [Advice on whistleblowing](#). The [NSPCC whistleblowing helpline](#) is also available for staff who do not feel able to raise concerns regarding child protection failures internally. Staff can call: 0800 028 0285 – line is available from 8:00am to 8:00pm, Monday to Friday or via e-mail: [help@nspcc.org.uk](mailto:help@nspcc.org.uk).

## **The School's legal duty**

The School has a legal duty to refer to the Disclosure and Barring Service anyone who has harmed, or poses a risk of harm, to a child, or if there is reason to believe the member of staff has committed one of a number of listed offences, and who has been removed from working (paid or unpaid) in regulated activity, or would have been removed had they not left. The DBS will consider whether to

bar the person. If these circumstances arise in relation to a member of staff at our school, a referral will be made as soon as possible after the resignation or removal of the individual in accordance with advice from the LADO and/or HR. The School must also consider whether to refer the case to the Secretary of State (via the Teaching Regulation Agency) if a teacher is dismissed or the setting ceases to use the services of a teacher because of serious misconduct, or might have dismissed them or ceased to use their services had they not left first.

## **Concerns that do not meet the “harm threshold”**

The term ‘low-level’ concern does not mean that it is insignificant, it means that the behaviour towards a child does not meet the thresholds as stated above. At Maypole School we promote an open and transparent culture in which all concerns about all adults working in or on behalf of the school or college (including supply teachers, volunteers and contractors) are dealt with promptly and appropriately.

We set out what low level concerns are, the importance of sharing these appropriately, how the setting addresses unprofessional behaviour and supports the individual to correct it at an early stage. This includes when staff should self-refer, where, for example, they have found themselves in a situation which could be misinterpreted, might appear compromising to others, and/or on reflection they believe they have behaved in such a way that they consider falls below the expected professional standards.

We understand the importance of recording low-level concerns and the actions taken in light of these being reported. The records are kept confidential and stored securely. We will review the records we hold to identify potential patterns and take action.

We recognise that low level concerns should not be included in references unless they relate to issues which would normally be included in a reference, for example, misconduct or poor performance. However, where a low-level concern (or group of concerns) has met the threshold for referral to the LADO and found to be substantiated, it should be referred to in a reference.

# Use of premises for non-school activities

St Ignatius Church use the premises twenty Sunday mornings and for five annual events over a weekend. This does not coincide with any Maypole School pupils being onsite. All staff involved have been DBS checked.

## Other Relevant Policies

To underpin the values and ethos of our school and our intent to ensure that pupils at our school are appropriately safeguarded the following policies are also included under our safeguarding umbrella. All these school policies are reviewed annually and approved by the governing body.

- Staff Code of Conduct
- Anti-Bullying
- Behaviour which includes measures to prevent bullying (including cyberbullying, prejudice-based and discriminatory bullying)
- Recruitment & Selection (which adheres to Part 3 of [Keeping Children Safe in Education](#)).
- Whistleblowing
- Attendance
- Online Safety
- Health and Safety including site security
- Harassment and discrimination including racial abuse
- Meeting the needs of pupils with medical conditions
- Intimate Care
- First aid
- Educational visits including overnight stays
- RSHE

## Legislation & Statutory Framework

**This policy has been devised in accordance with the following legislation and guidance.**

We comply with this guidance and the arrangements agreed and published by our 3 local safeguarding partners (Local Authorities, the Police and CCGs).

- [Working Together to Safeguard Children](#) DfE (July 2022)
- [Keeping Children Safe in Education](#) DfE (2023)
- The Governance Hand Book
- [Guidance for Safer Working Practices for Adults who work with Children and Young People in Education Settings](#) (May 2022)
- [What to do if you're worried a child is being abused DfE \(March 2015\)](#)
- [Information sharing: advice for practitioners providing safeguarding services](#) DfE (2023)

- [The Prevent duty: Departmental advice for schools and childcare providers](#) DfE (June 2015 – updated 2021)
- [Mandatory Reporting of Female Genital Mutilation- procedural information](#) Home Office (December 2015)
- [Sexual violence and sexual harassment between children in schools and colleges DfE \(July 2021\)](#)
- [Child sexual exploitation: guide for practitioners DfE \(February 2017\)](#)
- [Teaching online safety in school DfE \(June 2019\)](#)
- [Mental Health and Behaviour in Schools DfE \(November 2018\)](#)
- [Data protection: toolkit for schools DfE \(2023\)](#)
- Promoting the education of children with a social worker (June 2022)
- [Preventing youth violence and gang involvement](#)
- [Criminal exploitation of children and vulnerable adults: county lines](#)
- [Relationships Education, Relationships and Sex Education \(RSE\) and Health Education](#)
- <https://www.lambethsaferchildren.org.uk/>

### **This policy is also based on the following legislation:**

- Section 175 of the [Education Act 2002](#), which places a duty on schools and local authorities to safeguard and promote the welfare of pupils
- [The School Staffing \(England\) Regulations 2009](#), which sets out what must be recorded on the single central record and the requirement for at least one person conducting an interview to be trained in safer recruitment techniques
- Part 3 of the schedule to the [Education \(Independent School Standards\) Regulations 2014](#), which places a duty on independent schools to safeguard and promote the welfare of pupils at the school
- [The Children Act 1989](#) (and [2004 amendment](#)), which provides a framework for the care and protection of children
- Section 5B(11) of the Female Genital Mutilation Act 2003, as inserted by section 74 of the [Serious Crime Act 2015](#), which places a statutory duty on teachers to report to the police where they discover that female genital mutilation (FGM) appears to have been carried out on a girl under 18
- [Statutory guidance on FGM](#), which sets out responsibilities with regards to safeguarding and supporting girls affected by FGM
- [The Rehabilitation of Offenders Act 1974](#), which outlines when people with criminal convictions can work with children
- Schedule 4 of the [Safeguarding Vulnerable Groups Act 2006](#), which defines what ‘regulated activity’ is in relation to children
- [Statutory guidance on the Prevent duty](#), which explains schools’ duties under the Counter-Terrorism and Security Act 2015 with respect to protecting people from the risk of radicalisation and extremism.
- The [Childcare \(Disqualification\) and Childcare \(Early Years Provision Free of Charge\) \(Extended Entitlement\) \(Amendment\) Regulations 2018](#) (referred to in this policy as the “2018 Childcare Disqualification Regulations”) and [Childcare Act 2006](#), which set out who is disqualified from working with children

## **OTHER USEFUL LINKS**

### **Operation Makesafe**

A Surrey Police campaign to raise awareness of child sexual exploitation in the business community.

### **Wise Project-Surrey**

Project that offers one-to-one casework and group work/outreach for young people aged 13 – 25.

### **Barnardo's**

A national charity helping children in poverty, supporting young carers and helping families looking to foster or adopt.

### **Child Exploitation and Online Protection Command (CEOP) Education**

National Crime Agency advice for parents, children and young people on staying safe from sexual abuse and online grooming.

### **National Society for the Prevention of Cruelty to Children (NSPCC)**

A national children's charity, preventing abuse and helping those affected to recover.

### **Parents Against Child Exploitation (PACE)**

The leading national charity working with parents and carers of sexually exploited children.

### **ECPAT UK**

A UK organisation campaigning against child trafficking and exploitation.

### **Fearless**

A service that allows you to pass on information about crime 100% anonymously.

### **Enough Campaign**

A national campaign to tackle violence against women and girls.

## **Appendix 1**

### **Safeguarding Information Sheet for new or supply staff and regular visitors or volunteers**

We all have a statutory duty to safeguard and promote the welfare of children, and at our school we take this responsibility seriously.

#### **If you have any concerns**

If you have any concerns about a child or young person in our school, you must share this information immediately with our Designated Safeguarding Lead (DSL), Deputy DSL or if neither are available, a member of the senior leadership team.

Do not think that your worry is insignificant if it is about hygiene, appearance or behaviour – we would rather you told us as we would rather know about something that appears small than miss a worrying situation.

#### **If you think the matter is serious and may be related to child protection**

If you think the matter is very serious and may be related to child protection, for example, physical, emotional, sexual abuse or neglect, you must find one of the designated professionals detailed below and provide them with a written record of your concern. A copy of the form to complete can be obtained from the school office. Please ensure you complete all sections as described.

If you are unable to locate one of the designated staff, please ask a member of the office staff to find them and to ask them to speak with you immediately about a confidential and urgent matter.

#### **If an allegation concerns a member of staff, a child's foster carer or a volunteer**

Any allegation concerning a member of staff, a child's foster carer or a volunteer should be reported immediately to the Principal or Principal or executive headteacher. If an allegation is made about the Principal or Principal or executive headteacher you should pass this information to the Chair of the Governing Body. Alternatively, you can contact the LADO on 0300 123 1650. [NSPCC whistleblowing helpline](#) is also available for staff who do not feel able to raise concerns regarding child protection failures internally. Staff can call: 0800 028 0285 – line is available from 8:00am to 8:00pm, Monday to Friday or via e-mail: [help@nspcc.org.uk](mailto:help@nspcc.org.uk).

#### **Designated Safeguarding persons, and how to contact them**

Designated Safeguarding Lead (DSL): Craig Reed

Location of office: Maypole School, Green Street, Sunbury on Thames, TW16 6QE

Contact: [creed@maypoleschool.co.uk](mailto:creed@maypoleschool.co.uk)

Deputy Designated Lead: Kitty Clark

Location of office: Maypole School, Green Street, Sunbury on Thames, TW16 6QE

Contact: [kclark@maypoleschool.co.uk](mailto:kclark@maypoleschool.co.uk)

## Appendix 2

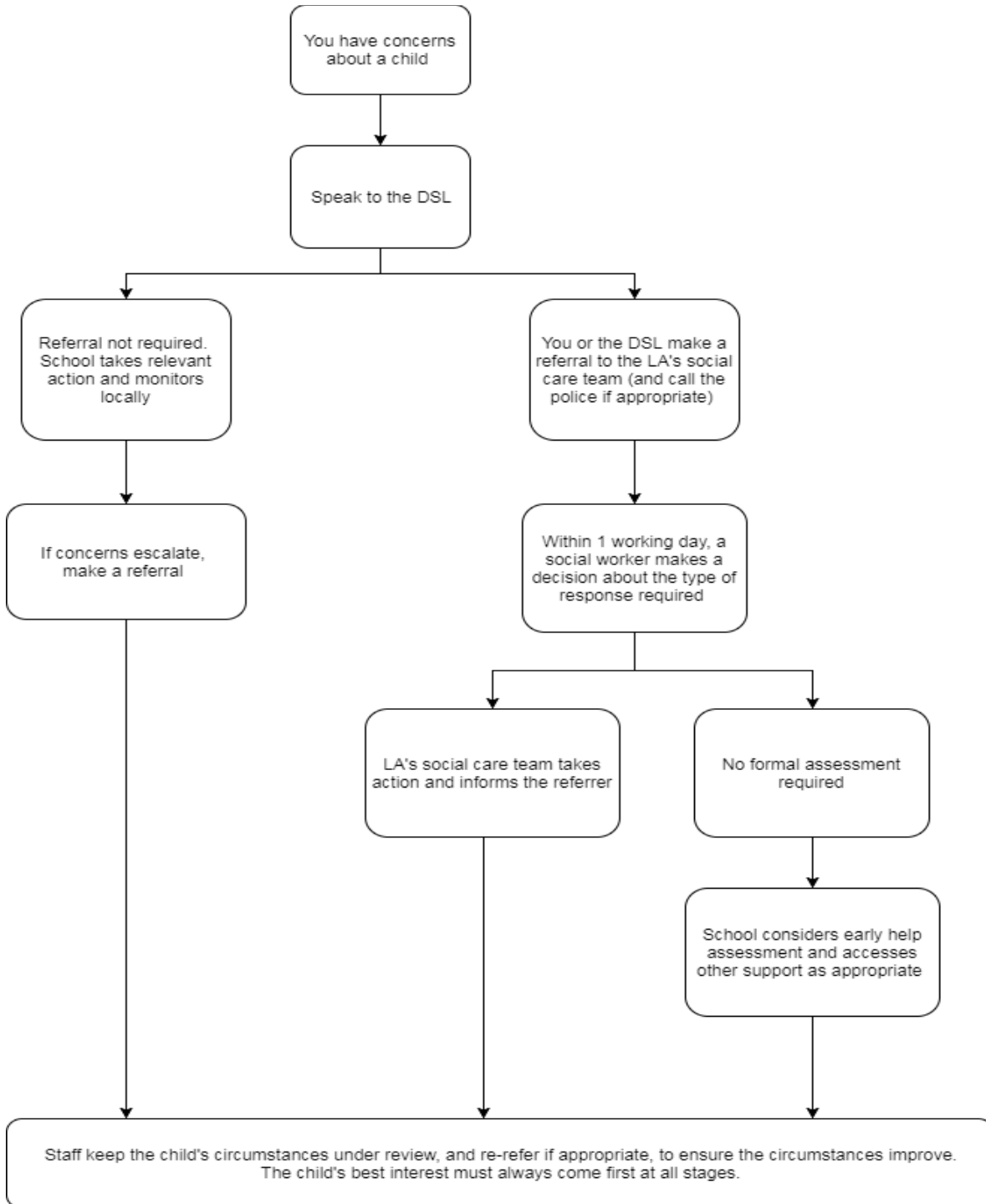
### Local Safeguarding Procedures

Surrey Single Point of Access: Professionals' Line 0300 200 1015

Public Line 0300 470 9100 (24 hours)

[Children's Single Point of Access \(C-SPA\) Surrey County Council](https://familyinformationdirectory.surreycc.gov.uk)  
<https://familyinformationdirectory.surreycc.gov.uk> > fsd

**Procedure if you have concerns about a child's welfare (as opposed to believing a child is suffering or likely to suffer from harm, or in immediate danger)**





## Appendix 3

**Advice for schools, colleges and alternative education providers where there are concerns about an adult who works within the setting.**

### **How to make a referral**

1. Discuss your referral with Surrey's LADO on 0300 123 31650
2. Download the Surrey LADO Allegations Form
3. Complete the form with as much detail as possible
4. Email the completed form to [lado@surreycc.gov.uk](mailto:lado@surreycc.gov.uk)

## **Appendix 4**

### **Arrangements for Safeguarding and Child Protection during COVID-19 at Maypole School**

#### **Monitoring Government direction**

In the event of a local or national Lockdown, or any other change in the Government's direction, Maypole School will refer to the publication Coronavirus (COVID-19): Safeguarding in schools, colleges and other providers guidance.

#### **The School's Covid Risk Assessment**

Please see Maypole School's website for a summary of the schools' risk assessments (RA) regarding COVID-19, and the COVID-19 Addendum to this policy.

#### **Return to School after a period of absence**

The schools' DSLs will be doing all they reasonably can to ask families to advise them of any changes regarding welfare, health and wellbeing that they should be aware of during an period of absence or before a child returns following a period of absence.

#### **Maintaining contact with children who are not in school**

The DSL (or deputy) will provide support to teachers and pastoral staff to ensure that contact is maintained with children (and their families) who are not in school. Where possible staff will try to speak directly to children on a regular basis to help identify any concerns.

Online learning will be offered to all pupils who are working from home, and daily contact will be made.

Whilst more children return to school, others may continue to stay at home and, in many cases, will be continuing to engage with their school online. Relevant staff who interact with children, including online, will continue to look out for signs a child may be at risk. Any such concerns will be dealt with as per the child protection policy.

## Appendix 5: Part 1 Keeping Children Safe in Education 2023 (DfE)

### Part one: Safeguarding information for all staff

#### What school and college staff should know and do A child centred and coordinated approach to safeguarding

1. Schools and colleges and their staff are an important part of the wider safeguarding system for children. This system is described in the statutory guidance Working Together to Safeguard Children.
2. Safeguarding and promoting the welfare of children is **everyone's** responsibility. **Everyone** who comes into contact with children and their families has a role to play. In order to fulfil this responsibility effectively, all practitioners should make sure their approach is child centred. This means that they should consider, at all times, what is in the **best interests** of the child.
3. No single practitioner can have a full picture of a child's needs and circumstances. If children and families are to receive the right help at the right time, **everyone** who comes into contact with them has a role to play in identifying concerns, sharing information and taking prompt action.
4. Safeguarding and promoting the welfare of children is defined for the purposes of this guidance as:
  - protecting children from maltreatment
  - preventing the impairment of children's mental and physical health or development
  - ensuring that children grow up in circumstances consistent with the provision of safe and effective care, and
  - taking action to enable all children to have the best outcomes.
5. 'Children' includes everyone under the age of 18.

#### The role of school and college staff

6. School and college staff are particularly important, as they are in a position to identify concerns early, provide help for children, promote children's welfare and prevent concerns from escalating.
7. **All** staff have responsibility to provide a safe environment in which children can learn.
8. **All** staff should be prepared to identify children who may benefit from early help.<sup>4</sup> Early help means providing support as soon as a problem emerges at any point in a child's life, from the foundation years through to the teenage years.
9. **Any staff member** who has **any** concerns about a child's welfare should follow the processes set out in paragraphs 51-67. Staff should expect to support social workers and other agencies following any referral.

10. **Every** school and college should have a designated safeguarding lead who will provide support to staff to carry out their safeguarding duties and who will liaise closely with other services such as local authority children's social care.

11. The designated safeguarding lead (and any deputies) are most likely to have a complete safeguarding picture and be the most appropriate person to advise on the response to safeguarding concerns.

12. The Teachers' Standards 2012 state that teachers (which includes principal or executive headteachers) should safeguard children's wellbeing and maintain public trust in the teaching profession as part of their professional duties.<sup>5</sup>

## What school and college staff need to know

13. **All** staff should be aware of systems within their school or college which support safeguarding, and these should be explained to them as part of staff induction. This should include the:

- child protection policy (which should amongst other things also include the policy and procedures to deal with child-on-child abuse)
- behaviour policy (which should include measures to prevent bullying, including cyberbullying, prejudice-based and discriminatory bullying)<sup>6</sup>
- staff behaviour policy (sometimes called a code of conduct) should amongst other things, include low-level concerns, allegations against staff and whistleblowing
- safeguarding response to children who are absent from education, particularly on repeat occasions and/or prolonged periods and
- role of the designated safeguarding lead (including the identity of the designated safeguarding lead and any deputies).

Copies of policies and a copy of Part one (or Annex A, if appropriate) of this document should be provided to **all** staff at induction.

*(<sup>4</sup>Detailed information on early help can be found in Chapter 1 of [Working Together to Safeguard Children](#). <sup>5</sup>The [Teachers' Standards](#) apply to: trainees working towards QTS; all teachers completing their statutory induction period (newly qualified teachers [NQTs]); and teachers in maintained schools, including maintained special schools, who are subject to the Education (School Teachers' Appraisal) (England) Regulations 2012.*

*<sup>6</sup>All schools are required to have a behaviour policy (full details are [here](#)). If a college chooses to have a behaviour policy it should be provided to staff as described above.)*

14. **All** staff should receive appropriate safeguarding and child protection training (including online safety which, amongst other things, includes an understanding of the expectations, applicable roles and responsibilities in relation to filtering and monitoring – see para 141 for further information) at induction. The training should be regularly updated. In addition, **all** staff should receive safeguarding and child protection (including online safety) updates (for example, via email, e-bulletins, and staff meetings), as required, and at least annually, to continue to provide them with relevant skills and knowledge to safeguard children effectively.

15. **All** staff should be aware of their local early help process and understand their role in it.

16. **All** staff should be aware of the process for making referrals to local authority children's social care and for statutory assessments<sup>7</sup> under the Children Act 1989, especially section 17 (children in need) and section 47 (a child suffering, or likely to suffer, significant harm) that may follow a referral, along with the role they might be expected to play in such assessments.

17. **All** staff should know what to do if a child tells them they are being abused, exploited, or neglected. Staff should know how to manage the requirement to maintain an appropriate level of confidentiality. This means only involving those who need to be involved, such as the designated safeguarding lead (or a deputy) and local authority children's social care. Staff should never promise a child that they will not tell anyone about a report of any form of abuse, as this may ultimately not be in the best interests of the child.

18. **All** staff should be able to reassure victims that they are being taken seriously and that they will be supported and kept safe. A victim should never be given the impression that they are creating a problem by reporting **any** form of abuse and/or neglect. Nor should a victim ever be made to feel ashamed for making a report.

19. **All staff** should be aware that children may not feel ready or know how to tell someone that they are being abused, exploited, or neglected, and/or they may not recognise their experiences as harmful. For example, children may feel embarrassed, humiliated, or are being threatened. This could be due to their vulnerability, disability and/or sexual orientation or language barriers. This should not prevent staff from having a professional curiosity and speaking to the designated safeguarding lead if they have concerns about a child. It is also important that staff determine how best to build trusted relationships with children and young people which facilitate communication.

<sup>7</sup>Detailed information on statutory assessments can be found in Chapter 1 of [Working Together to Safeguard Children](#)

## What school and college staff should look out for

### Early help

20. **Any** child may benefit from early help, but all school and college staff should be particularly alert to the potential need for early help for a child who:

- is disabled or has certain health conditions and has specific additional needs
- has special educational needs (whether or not they have a statutory Education, Health and Care plan)
- has a mental health need
- is a young carer
- is showing signs of being drawn in to anti-social or criminal behaviour, including gang involvement and association with organised crime groups or county lines
- is frequently missing/goes missing from care or from home
- is at risk of modern slavery, trafficking, sexual or criminal exploitation
- is at risk of being radicalised or exploited
- has a family member in prison, or is affected by parental offending
- is in a family circumstance presenting challenges for the child, such as drug and alcohol misuse, adult mental health issues and domestic abuse
- is misusing alcohol and other drugs themselves

- has returned home to their family from care
- is at risk of so-called 'honour'-based abuse such as Female Genital Mutilation or Forced Marriage
- is a privately fostered child, or
- is persistently absent from education, including persistent absences for part of the school day.

### **Abuse and neglect**

21. **All** staff should be aware of indicators of abuse and neglect (see below), understanding that children can be at risk of harm inside and outside of the school/college, inside and outside of home, and online. Exercising professional curiosity and knowing what to look for is vital for the early identification of abuse and neglect so that staff are able to identify cases of children who may be in need of help or protection.

22. **All** school and college staff should be aware that abuse, neglect and safeguarding issues are rarely standalone events and cannot be covered by one definition or one label alone. In most cases, multiple issues will overlap with one another.

23. **All** staff, but especially the designated safeguarding lead (and deputies) should consider whether children are at risk of abuse or exploitation in situations outside their families. Extra-familial harms take a variety of different forms and children can be vulnerable to multiple harms including (but not limited to) sexual abuse (including harassment and exploitation), domestic abuse in their own intimate relationships (teenage relationship abuse), criminal exploitation, serious youth violence, county lines, and radicalisation.

24. **All** staff should be aware that technology is a significant component in many safeguarding and wellbeing issues. Children are at risk of abuse and other risks online as well as face to face. In many cases abuse and other risks will take place concurrently both online and offline. Children can also abuse other children online, this can take the form of abusive, harassing, and misogynistic/misandrist messages, the non-consensual sharing of indecent images, especially around chat groups, and the sharing of abusive images and pornography to those who do not want to receive such content.

25. **In all cases, if staff are unsure, they should always speak to the designated safeguarding lead or a deputy.**

### **Indicators of abuse and neglect**

26. **Abuse:** a form of maltreatment of a child. Somebody may abuse or neglect a child by inflicting harm or by failing to act to prevent harm. Harm can include ill treatment that is not physical as well as the impact of witnessing ill treatment of others. This can be particularly relevant, for example, in relation to the impact on children of all forms of domestic abuse. Children may be abused in a family or in an institutional or community setting by those known to them or, more rarely, by others. Abuse can take place wholly online, or technology may be used to facilitate offline abuse. Children may be abused by an adult or adults or by another child or children.

27. **Physical abuse:** a form of abuse which may involve hitting, shaking, throwing, poisoning, burning or scalding, drowning, suffocating or otherwise causing physical harm to a child. Physical

harm may also be caused when a parent or carer fabricates the symptoms of, or deliberately induces, illness in a child.

**28. Emotional abuse:** the persistent emotional maltreatment of a child such as to cause severe and adverse effects on the child's emotional development. It may involve conveying to a child that they are worthless or unloved, inadequate, or valued only insofar as they meet the needs of another person. It may include not giving the child opportunities to express their views, deliberately silencing them or 'making fun' of what they say or how they communicate. It may feature age or developmentally inappropriate expectations being imposed on children. These may include interactions that are beyond a child's developmental capability as well as overprotection and limitation of exploration and learning or preventing the child from participating in normal social interaction. It may involve seeing or hearing the ill-treatment of another. It may involve serious bullying (including cyberbullying), causing children frequently to feel frightened or in danger, or the exploitation or corruption of children. Some level of emotional abuse is involved in all types of maltreatment of a child, although it may occur alone.

**29. Sexual abuse:** involves forcing or enticing a child or young person to take part in sexual activities, not necessarily involving violence, whether or not the child is aware of what is happening. The activities may involve physical contact, including assault by penetration (for example rape or oral sex) or non-penetrative acts such as masturbation, kissing, rubbing, and touching outside of clothing. They may also include non-contact activities, such as involving children in looking at, or in the production of, sexual images, watching sexual activities, encouraging children to behave in sexually inappropriate ways, or grooming a child in preparation for abuse. Sexual abuse can take place online, and technology can be used to facilitate offline abuse. Sexual abuse is not solely perpetrated by adult males. Women can also commit acts of sexual abuse, as can other children. The sexual abuse of children by other children is a specific safeguarding issue in education and **all** staff should be aware of it and of their school or college's policy and procedures for dealing with it.

**30. Neglect:** the persistent failure to meet a child's basic physical and/or psychological needs, likely to result in the serious impairment of the child's health or development. Neglect may occur during pregnancy, for example, as a result of maternal substance abuse. Once a child is born, neglect may involve a parent or carer failing to: provide adequate food, clothing and shelter (including exclusion from home or abandonment); protect a child from physical and emotional harm or danger; ensure adequate supervision (including the use of inadequate caregivers); or ensure access to appropriate medical care or treatment. It may also include neglect of, or unresponsiveness to, a child's basic emotional needs.

## Safeguarding issues

**31. All** staff should have an awareness of safeguarding issues that can put children at risk of harm. Behaviours linked to issues such as drug taking and/or alcohol misuse, deliberately missing education, serious violence (including that linked to county lines), radicalisation and consensual and non-consensual sharing of nude and semi-nude images and/or videos<sup>8</sup> can be signs that children are at risk. Below are some safeguarding issues all staff should be aware of. **Additional information on these safeguarding issues and information on other safeguarding issues is included in Annex B.**

## Child-on-child abuse

32. **All** staff should be aware that children can abuse other children (often referred to as child-on-child abuse), and that it can happen both inside and outside of school or college and online. **All** staff should be clear as to the school's or college's policy and procedures with regard to child-on-child abuse and the important role they have to play in preventing it and responding where they believe a child may be at risk from it.

33. **All** staff should understand that even if there are no reports in their schools or colleges it does not mean it is not happening, it may be the case that it is just not being reported. As such it is important if staff have **any** concerns regarding child-on-child abuse they should speak to their designated safeguarding lead (or a deputy).

34. It is essential that **all** staff understand the importance of challenging inappropriate behaviours between children, many of which are listed below, that are abusive in nature. Downplaying certain behaviours, for example dismissing sexual harassment as "just banter", "just having a laugh", "part of growing up" or "boys being boys" can lead to a culture of unacceptable behaviours, an unsafe environment for children and in worst case scenarios a culture that normalises abuse leading to children accepting it as normal and not coming forward to report it.

35. Child-on-child abuse is most likely to include, but may not be limited to:

- bullying (including cyberbullying, prejudice-based and discriminatory bullying)
- abuse in intimate personal relationships between children (sometimes known as 'teenage relationship abuse')
- physical abuse such as hitting, kicking, shaking, biting, hair pulling, or otherwise causing physical harm (this may include an online element which facilitates, threatens and/or encourages physical abuse)
- sexual violence,<sup>9</sup> such as rape, assault by penetration and sexual assault; (this may include an online element which facilitates, threatens and/or encourages sexual violence)
- sexual harassment,<sup>10</sup> such as sexual comments, remarks, jokes and online sexual harassment, which may be standalone or part of a broader pattern of abuse
- causing someone to engage in sexual activity without consent, such as forcing someone to strip, touch themselves sexually, or to engage in sexual activity with a third party
- consensual and non-consensual sharing of nude and semi-nude images and/or videos<sup>11</sup> (also known as sexting or youth produced sexual imagery)
- upskirting,<sup>12</sup> which typically involves taking a picture under a person's clothing without their permission, with the intention of viewing their genitals or buttocks to obtain sexual gratification, or cause the victim humiliation, distress, or alarm, and
- initiation/hazing type violence and rituals (this could include activities involving harassment, abuse or humiliation used as a way of initiating a person into a group and may also include an online element).

*(8 Consensual image sharing, especially between older children of the same age, may require a different response. It might not be abusive – but children still need to know it is illegal- whilst non-consensual is illegal and abusive. UKCIS provides detailed advice about sharing of nudes and semi-nude images and videos. 9 For further information about sexual violence see Part 5 and Annex B. 10 For further information about sexual harassment see Part 5 and Annex B.*



## **Child Sexual Exploitation (CSE) and Child Criminal Exploitation (CCE)**

36. Both CSE and CCE are forms of abuse that occur where an individual or group takes advantage of an imbalance in power to coerce, manipulate or deceive a child into taking part in sexual or criminal activity, in exchange for something the victim needs or wants, and/or for the financial advantage or increased status of the perpetrator or facilitator and/or through violence or the threat of violence. CSE and CCE can affect children, both male and female and can include children who have been moved (commonly referred to as trafficking) for the purpose of exploitation.

### **Child Criminal Exploitation (CCE)**

37. Some specific forms of CCE can include children being forced or manipulated into transporting drugs or money through county lines, working in cannabis factories, shoplifting, or pickpocketing. They can also be forced or manipulated into committing vehicle crime or threatening/committing serious violence to others.

38. Children can become trapped by this type of exploitation, as perpetrators can threaten victims (and their families) with violence or entrap and coerce them into debt. They may be coerced into carrying weapons such as knives or begin to carry a knife for a sense of protection from harm from others. As children involved in criminal exploitation often commit crimes themselves, their vulnerability as victims is not always recognised by adults and professionals, (particularly older children), and they are not treated as victims despite the harm they have experienced. They may still have been criminally exploited even if the activity appears to be something they have agreed or consented to.

39. It is important to note that the experience of girls who are criminally exploited can be very different to that of boys. The indicators may not be the same, however professionals should be aware that girls are at risk of criminal exploitation too. It is also important to note that both boys and girls being criminally exploited may be at higher risk of sexual exploitation.

### **Child Sexual Exploitation (CSE)**

40. CSE is a form of child sexual abuse. Sexual abuse may involve physical contact, including assault by penetration (for example, rape or oral sex) or nonpenetrative acts such as masturbation, kissing, rubbing, and touching outside clothing. It may include non-contact activities, such as involving children in the production of sexual images, forcing children to look at sexual images or watch sexual activities, encouraging children to behave in sexually inappropriate ways or grooming a child in preparation for abuse including via the internet.

41. CSE can occur over time or be a one-off occurrence and may happen without the child's immediate knowledge for example through others sharing videos or images of them on social media.

42. CSE can affect any child who has been coerced into engaging in sexual activities. This includes 16- and 17-year-olds who can legally consent to have sex. Some children may not realise they are being exploited for example they believe they are in a genuine romantic relationship.

## Domestic Abuse

43. Domestic abuse can encompass a wide range of behaviours and may be a single incident or a pattern of incidents. That abuse can be, but is not limited to, psychological, physical, sexual, financial or emotional. Children can be victims of domestic abuse. They may see, hear, or experience the effects of abuse at home and/or suffer domestic abuse in their own intimate relationships (teenage relationship abuse). All of which can have a detrimental and long-term impact on their health, well-being, development, and ability to learn.

## Female Genital Mutilation (FGM)

44. Whilst **all** staff should speak to the designated safeguarding lead (or a deputy) with regard to any concerns about female genital mutilation (FGM), there is a specific.

**legal duty on teachers.**<sup>13</sup> If a teacher, in the course of their work in the profession, discovers that an act of FGM appears to have been carried out on a girl under the age of 18, the teacher **must** report this to the police.

## Mental Health

45. **All** staff should be aware that mental health problems can, in some cases, be an indicator that a child has suffered or is at risk of suffering abuse, neglect or exploitation.

46. Only appropriately trained professionals should attempt to make a diagnosis of a mental health problem. Education staff, however, are well placed to observe children day-to-day and identify those whose behaviour suggests that they may be experiencing a mental health problem or be at risk of developing one. Schools and colleges can access a range of advice to help them identify children in need of extra mental health support, this includes working with external agencies.

47. If staff have a mental health concern about a child that is also a safeguarding concern, immediate action should be taken, following their child protection policy, and speaking to the designated safeguarding lead or a deputy.

## Serious violence

48. **All** staff should be aware of the indicators, which may signal children are at risk from, or are involved with, serious violent crime. These may include increased absence from school or college, a change in friendships or relationships with older individuals or groups, a significant decline in performance, signs of self-harm or a significant change in wellbeing, or signs of assault or unexplained injuries. Unexplained gifts or new possessions could also indicate that children have been approached by, or are involved with, individuals associated with criminal networks or gangs and may be at risk of criminal exploitation.

## Additional information and support

49. Departmental advice [What to Do if You Are Worried a Child is Being Abused - Advice for Practitioners](#) provides more information on understanding and identifying abuse and neglect. Examples of potential indicators of abuse and neglect are highlighted throughout the advice and

will be particularly helpful for school and college staff. The [NSPCC](#) website also provides useful additional information on abuse and neglect and what to look out for.

**50. Annex B contains important additional information about specific forms of abuse and safeguarding issues. School and college leaders and those staff who work directly with children should read Annex B.**

*<sup>13</sup> Under section 5B(11) (a) of the Female Genital Mutilation Act 2003, “teacher” means, in relation to England, a person within section 141A(1) of the Education Act 2002 (persons employed or engaged to carry out teaching work at schools and other institutions in England).*

## What school and college staff should do if they have concerns about a child

51. Staff working with children are advised to maintain an attitude of **‘it could happen here’** where safeguarding is concerned. When concerned about the welfare of a child, staff should always act in the **best interests** of the child.

52. If staff have **any concerns** about a child’s welfare, they should act on them **immediately**. See page 22 for a flow chart setting out the process for staff when they have concerns about a child.

53. If staff have a concern, they should follow their own organisation’s child protection policy and speak to the designated safeguarding lead (or a deputy).

54. Options will then include:

- managing any support for the child internally via the school’s or college’s own pastoral support processes
- undertaking an early help assessment,<sup>14</sup> or
- making a referral to statutory services,<sup>15</sup> for example as the child might be in need, is in need or suffering, or is likely to suffer harm.

55. The designated safeguarding lead (or deputy) should always be available to discuss safeguarding concerns. If in exceptional circumstances, the designated safeguarding lead (or a deputy) is not available, this should not delay appropriate action being taken. Staff should consider speaking to a member of the senior leadership team and/or take advice from local authority children’s social care. In these circumstances, any action taken should be shared with the designated safeguarding lead (or a deputy) as soon as is practically possible.

*<sup>14</sup> Further information on early help assessments, provision of early help services and accessing services is in Chapter 1 of [Working Together to Safeguard Children](#).*

*<sup>15</sup> Chapter 1 of [Working Together to Safeguard Children](#) sets out that the safeguarding partners should publish a threshold document that should include the criteria, including the level of need, for when a case should be referred to local authority children’s social care for assessment and for statutory services under section 17 and 47. Local authorities, with their partners, should develop and publish local protocols for assessment. A local protocol should set out clear arrangements for how cases will be managed once a child is referred into local authority children’s social care.)*

56. Staff should not assume a colleague, or another professional will take action and share information that might be critical in keeping children safe. They should be mindful that early

information sharing is vital for the effective identification, assessment, and allocation of appropriate service provision, whether this is when problems first emerge, or where a child is already known to local authority children's social care (such as a child in need or a child with a protection plan). [Information Sharing: Advice for Practitioners Providing Safeguarding Services to Children, Young People, Parents and Carers](#) supports staff who have to make decisions about sharing information. This advice includes the seven golden rules for sharing information and considerations with regard to the Data Protection Act 2018 (DPA) and UK General Data Protection Regulation (UK GDPR).

57. DPA and UK GDPR **do not** prevent the sharing of information for the purposes of keeping children safe and promoting their welfare. If in any doubt about sharing information, staff should speak to the designated safeguarding lead (or a deputy). Fears about sharing information **must not** be allowed to stand in the way of the need to safeguard and promote the welfare of children.

## Early help assessment

58. If early help is appropriate, the designated safeguarding lead (or a deputy) will generally lead on liaising with other agencies and setting up an inter-agency assessment as appropriate. Staff may be required to support other agencies and professionals in an early help assessment, in some cases acting as the lead practitioner. Any such cases should be kept under constant review and consideration given to a referral to local authority children's social care for assessment for statutory services if the child's situation does not appear to be improving or is getting worse.

## Statutory children's social care assessments and services

59. **Where a child is suffering, or is likely to suffer from harm, it is important that a referral to local authority children's social care (and if appropriate the police) is made immediately.** Referrals should follow the local referral process.

60. Local authority children's social care assessments should consider where children are being harmed in contexts outside the home, so it is important that schools and colleges provide as much information as possible as part of the referral process. This will allow any assessment to consider all the available evidence and enable a contextual approach to address such harm. Additional information is available here: [Contextual Safeguarding](#).

61. The online tool [Report Child Abuse to Your Local Council](#) directs to the relevant local authority children's social care contact number.

## Children in need

62. A child in need is defined under the Children Act 1989 as a child who is unlikely to achieve or maintain a reasonable level of health or development, or whose health and development is likely to be significantly or further impaired, without the provision of services; or a child who is disabled. Local authorities are required to provide services for children in need for the purposes of safeguarding and promoting their welfare. Children in need may be assessed under section 17 of the Children Act 1989.

## Children suffering or likely to suffer significant harm:

63. Local authorities, with the help of other organisations as appropriate, have a duty to make enquiries under section 47 of the Children Act 1989 if they have reasonable cause to suspect that a child is suffering, or is likely to suffer, significant harm. Such enquiries enable them to decide whether they should take any action to safeguard and promote the child's welfare and must be initiated where there are concerns about maltreatment. This includes **all** forms of abuse and neglect.

### What will the local authority do?

64. Within one working day of a referral being made, a local authority social worker should acknowledge its receipt to the referrer and make a decision about the next steps and the type of response that is required. This will include determining whether:

- the child requires immediate protection and urgent action is required
- any services are required by the child and family and what type of services
- the child is in need and should be assessed under section 17 of the Children Act 1989. Chapter one of [Working Together to Safeguard Children](#) provides details of the assessment process
- there is reasonable cause to suspect the child is suffering or likely to suffer significant harm, and whether enquiries must be made, and the child assessed under section 47 of the Children Act 1989. Chapter one of [Working Together to Safeguard Children](#) provides details of the assessment process, and
- further specialist assessments are required to help the local authority to decide what further action to take.

65. The referrer should follow up if this information is not forthcoming.

66. If Social Workers decide to carry out a statutory assessment, staff should do everything they can to support that assessment (supported by the designated safeguarding lead (or a deputy) as required).

67. If, after a referral, the child's situation does not appear to be improving, the referrer should consider following local escalation procedures to ensure their concerns have been addressed and, most importantly, that the child's situation improves.

### Record keeping

68. **All** concerns, discussions and decisions made, and the reasons for those decisions, should be recorded in writing. This will also help if/when responding to any complaints about the way a case has been handled by the school or college. Information should be kept confidential and stored securely. It is good practice to keep concerns and referrals in a separate child protection file for each child.

Records should include:

- a clear and comprehensive summary of the concern
- details of how the concern was followed up and resolved, and
- a note of any action taken, decisions reached and the outcome.

69. If in doubt about recording requirements, staff should discuss with the designated safeguarding lead (or a deputy).

## Why is all of this important?

70. It is important for children to receive the right help at the right time to address safeguarding risks, prevent issues escalating and to promote children's welfare. Research and serious case reviews have repeatedly shown the dangers of failing to take effective action.<sup>16</sup> Further information about serious case reviews can be found in Chapter four of [Working Together to Safeguard Children](#). Examples of poor practice include:

- failing to act on and refer the early signs of abuse and neglect
- poor record keeping
- failing to listen to the views of the child
- failing to re-assess concerns when situations do not improve
- not sharing information with the right people within and between agencies
- sharing information too slowly, and
- a lack of challenge to those who appear not to be taking action.

<sup>16</sup>An analysis of serious case reviews can be found at [gov.uk/government/publications/analysis-of-serious-case-reviews-2014-to-2017](https://www.gov.uk/government/publications/analysis-of-serious-case-reviews-2014-to-2017).

## What school and college staff should do if they have a safeguarding concern or an allegation about another staff member

71. Schools and colleges should have processes and procedures in place to manage **any** safeguarding concern or allegation (no matter how small) about staff members (including supply staff, volunteers, and contractors).

72. If staff have a safeguarding concern or an allegation is made about another member of staff (including supply staff, volunteers, and contractors) **harming or posing a risk of harm to children**, then:

- this should be referred to the principal or executive headteacher or principal
- where there is a concern/allegation about the principal or executive headteacher or principal, this should be referred to the chair of governors, chair of the management committee or proprietor of an independent school, and
- in the event of a concern/allegation about the principal or executive headteacher, where the principal or executive headteacher is also the sole proprietor of an independent school, or a situation where there is a conflict of interest in reporting the matter to the principal or executive headteacher, this should be reported directly to the local authority designated officer(s) (LADOs). Details of your local LADO should be easily accessible on your local authority's website.

73. If staff have a safeguarding concern or an allegation about another member of staff (including supply staff, volunteers or contractors) that **does not** meet the harm threshold, then this should be shared in accordance with the school or college low-level concerns policy. Further details can be found in Part four of this guidance.

## What school or college staff should do if they have concerns about safeguarding practices within the school or college

74. All staff and volunteers should feel able to raise concerns about poor or unsafe practice and potential failures in the school's or college's safeguarding regime and know that such concerns will be taken seriously by the senior leadership team.

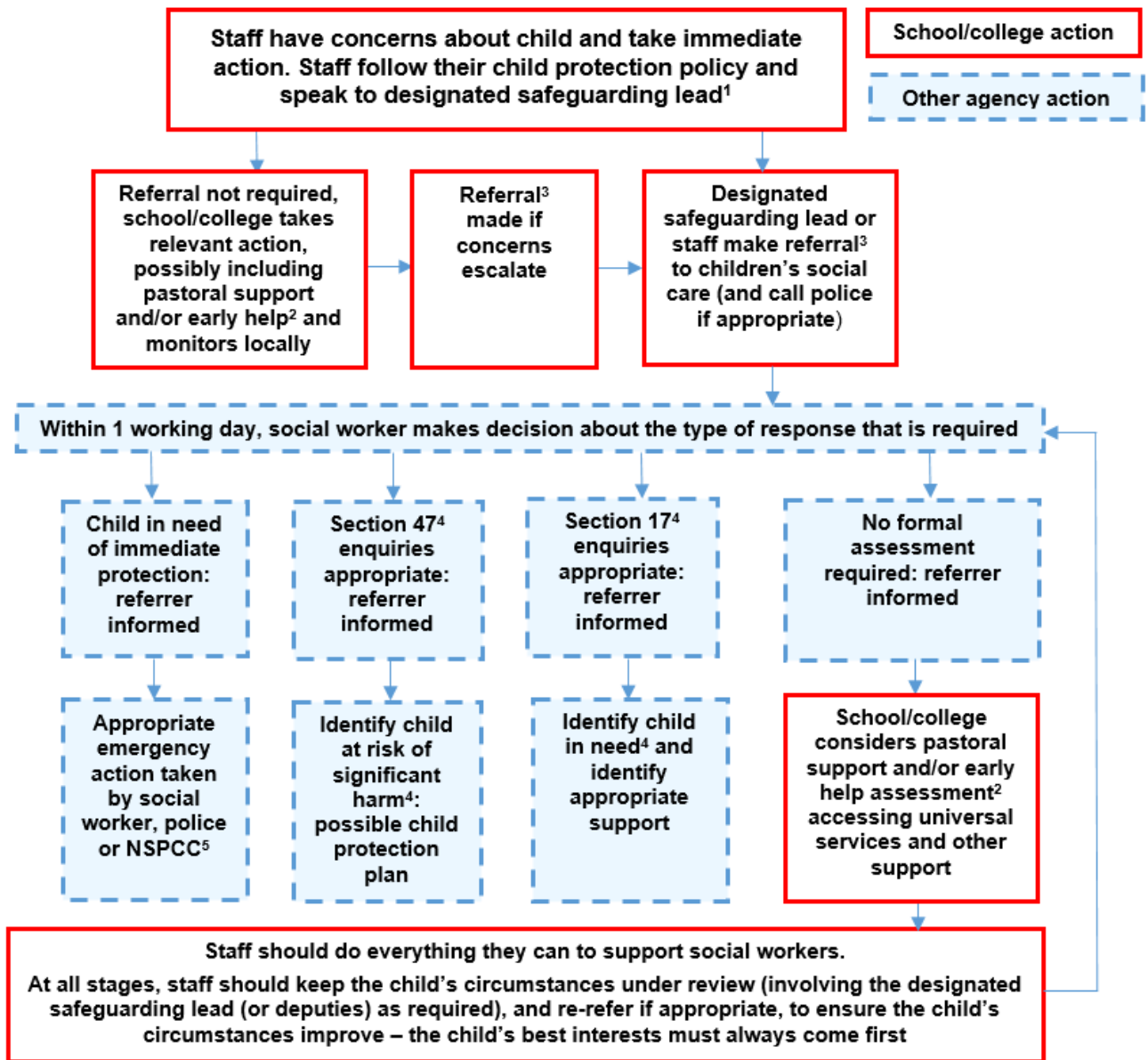
75. Appropriate whistleblowing procedures should be put in place for such concerns to be raised with the school's or college's senior leadership team.

76. Where a staff member feels unable to raise an issue with their employer, or feels that their genuine concerns are not being addressed, other whistleblowing channels are open to them:

- general guidance on whistleblowing can be found via: [Advice on Whistleblowing](#)
- the NSPCC's [what you can do to report abuse dedicated helpline](#) is available as an alternative route for staff who do not feel able to raise concerns regarding child protection failures internally, or have concerns about the way a concern is being handled by their school or college. Staff can call 0800 028 0285 – line is available from 8:00 AM to 8:00 PM, Monday to Friday and email: [help@nspcc.org.uk](mailto:help@nspcc.org.uk).<sup>17</sup>

*(<sup>17</sup>Alternatively, staff can write to: National Society for the Prevention of Cruelty to Children (NSPCC), Weston House, 42 Curtain, Road, London EC2A 3NH.)*

## Actions where there are concerns about a child



<sup>1</sup> In cases which also involve a concern or an allegation of abuse against a staff member, see Part four of this guidance.

<sup>2</sup> Early help means providing support as soon as a problem emerges at any point in a child's life. Where a child would benefit from co-ordinated early help, an early help inter-agency assessment should be

arranged. Chapter one of [Working Together to Safeguard Children](#) provides detailed guidance on the early help process.

<sup>3</sup> Referrals should follow the process set out in the local threshold document and local protocol for assessment. Chapter one of [Working Together to Safeguard Children](#).

<sup>4</sup> Under the Children Act 1989, local authorities are required to provide services for children in need for the purposes of safeguarding and promoting their welfare. Children in need may be assessed under section 17 of the Children Act 1989. Under section 47 of the Children Act 1989, where a local authority has reasonable cause to suspect that a child is suffering or likely to suffer significant harm, it has a duty to make enquiries to decide whether to take action to safeguard or promote the child's welfare. Full details are in Chapter one of [Working Together to Safeguard Children](#).

<sup>5</sup> This could include applying for an Emergency Protection Order (EPO).



# Annex A: Safeguarding information for school and college staff

The following is a condensed version of Part one of Keeping children safe in education. It can be provided (instead of Part one) to those staff who do not directly work with children, if the governing body or proprietor think it will provide a better basis for those staff to promote the welfare of and safeguard children.

## The role of school and college staff

1. Safeguarding and promoting the welfare of children is **everyone's** responsibility. **Everyone** who comes into contact with children has an important role to play.
2. School and college staff are particularly important as they are in a position to identify concerns early, provide help for children, promote children's welfare and prevent concerns from escalating. It is important all staff (including those who do not work directly with children) recognise the important role they play in protecting children.

## What school and college staff need to know

3. For the purposes of safeguarding, a child is anyone under the age of 18. Safeguarding and promoting the welfare of children is defined for the purposes of this guidance as:

- protecting children from maltreatment
- preventing impairment of children's mental and physical health or development
- ensuring that children grow up in circumstances consistent with the provision of safe and effective care, and
- taking action to enable all children to have the best outcomes.

### All staff should:

- Be aware of the systems in their school or college which support safeguarding, and these should be explained to them as part of staff induction. As a minimum this Annex and the child protection policy should be shared with staff at induction
- Receive appropriate safeguarding and child protection training (including online safety which, amongst other things, includes an understanding of the expectations, applicable roles and responsibilities in relation to filtering and monitoring) which is regularly updated. In addition, all staff should receive safeguarding and child protection updates (including online safety) (for example, via emails, e-bulletins and staff meetings), as required, and at least annually, to provide them with the skills and knowledge to safeguard children effectively
- Know the identity of the designated safeguarding lead (and any deputies) and how to contact them
- know what to do if a child tells them they are being abused or neglected. This includes understanding they should never promise a child that they will not tell anyone else about a report of abuse, as this is unlikely to be in the best interests of the child, and,

- should be able to reassure all victims that they are being taken seriously and that they will be supported and kept safe. A victim should never be given the impression that they are creating a problem by reporting abuse, sexual violence or sexual harassment, nor should a victim ever be made to feel ashamed for making a report.
- should be aware that technology is a significant component in many safeguarding and wellbeing issues. Children are at risk of abuse and other risks online as well as face to face. In many cases abuse and other risks will take place concurrently both online and offline. Children can also abuse other children online, this can take the form of abusive, harassing, and misogynistic/misandrist messages, the non-consensual sharing of indecent images, especially around chat groups, and the sharing of abusive images and pornography, to those who do not want to receive such content.

## What school and college staff should look out for Abuse and neglect

4. Knowing what to look for is vital to the early identification of abuse and neglect. **All** staff should be aware of indicators of abuse and neglect, including exploitation, so that they are able to identify cases of children who may be in need of help or protection. Abuse can take place wholly online, or technology may be used to facilitate offline abuse.

5. If staff are unsure, they should always speak to the designated safeguarding lead (or a deputy).

### Forms of abuse and neglect

6. **Abuse:** a form of maltreatment of a child. Somebody may abuse or neglect a child by inflicting harm or by failing to act to prevent harm. Children may be abused by other children or adults, in a family or in an institutional or community setting by those known to them or, more rarely, by others.

7. **Physical abuse:** a form of abuse that may involve hitting, shaking, throwing,

poisoning, burning or scalding, drowning, suffocating or otherwise causing physical harm to a child.

8. **Emotional abuse:** the persistent emotional maltreatment of a child such as to cause severe and adverse effects on the child's emotional development. It may involve conveying to a child that they are worthless or unloved, inadequate, or valued only insofar as they meet the needs of another person. Some level of emotional abuse is involved in all types of maltreatment of a child, although it may occur alone.

9. **Sexual abuse:** involves forcing or enticing a child or young person to take part in sexual activities, not necessarily involving violence, whether or not the child is aware of what is happening. The activities may involve physical contact, including assault by penetration (for example, rape or oral sex) or non-penetrative acts such as masturbation, kissing, rubbing and touching outside of clothing. They may also include non-contact activities, such as involving children in looking at, or in the production of, sexual images, watching sexual activities, encouraging children to behave in sexually inappropriate ways, or grooming a child in preparation for abuse. Sexual abuse can take place online, and technology can be used to facilitate offline abuse. Sexual abuse is not solely perpetrated by adult males. Females can also be abusers as can other children. The sexual abuse of children by other children is a specific safeguarding issue (also known as child-on-child abuse) in education

and **all** staff should be aware of it and their school or colleges policy and procedures for dealing with it.

10. **Neglect:** the persistent failure to meet a child's basic physical and/or psychological needs, likely to result in the serious impairment of the child's health or development. Neglect may involve a parent or carer failing to provide adequate food, clothing and shelter (including exclusion from home or abandonment); protect a child from physical and emotional harm or danger; ensure adequate supervision (including the use of inadequate caregivers); or ensure access to appropriate medical care or treatment. It may also include neglect of, or unresponsiveness to, a child's basic emotional needs.

11. **All** staff should be aware that child sexual and child criminal exploitation are forms of child abuse.

### Safeguarding issues

12. **All** staff should have an awareness of safeguarding issues that can put children at risk of harm. Behaviours linked to issues such as drug taking and/or alcohol misuse, deliberately missing education, serious violence (including that linked to county lines), radicalisation and consensual and non-consensual sharing of nude and semi-nude images and/or videos<sup>145</sup> (also known as youth produced sexual imagery) put children in danger.

### Child-on-child abuse

13. **All** staff should be aware that children can abuse other children at any age (often referred to as child-on-child abuse). And that it can happen both inside and outside of school or college and online. It is important that all staff recognise the indicators and signs of abuse and know how to identify it and respond to reports.

14. **All** staff should be clear as to the school or college's policy and procedures with regards to child-on-child abuse. Child-on-child abuse is most likely to include, but may not be limited to:

- bullying (including cyberbullying, prejudice-based and discriminatory bullying)
- abuse in intimate personal relationships between children (sometimes known as 'teenage relationship abuse')
- physical abuse which can include hitting, kicking, shaking, biting, hair pulling, or otherwise causing physical harm
- sexual violence, such as rape, assault by penetration and sexual assault
- sexual harassment, such as sexual comments, remarks, jokes and online sexual harassment

### What school and college staff should do if they have concerns about a child

15. Staff working with children should maintain an attitude of '**it could happen here**' where safeguarding is concerned. When concerned about the welfare of a child, staff should always act in the **best interests** of the child.

16. Staff should not assume a colleague or another professional will take action and share information that might be critical in keeping children safe.

17. If staff have **any concerns** about a child's welfare, they should act on them immediately. They should follow their school or college's child protection policy and speak to the designated safeguarding lead (or a deputy). In the absence of the designated safeguarding lead (or a deputy) staff should speak to a member of the school or college's senior leadership team.

<sup>145</sup> Consensual image sharing, especially between older children of the same age, may require a different response. It might not be abusive – but children still need to know it is illegal- whilst non-consensual is illegal and abusive. [UKCIS](#) provides detailed advice about sharing of nudes and semi-nude images and videos.

18. The designated safeguarding lead (or a deputy) will generally lead on next steps, including who else, if anyone, in the school or college should be informed and whether to pass a concern to local authority children's social care and/or the police. In some instances, staff may be expected to support the local authority children social care assessment process. If this is the case, the designated safeguarding lead (or a deputy) will support them.

### **Why is all of this important?**

19. It is important for children to receive the right help at the right time to address safeguarding risks and prevent issues escalating and to promote children's welfare. Research and serious case reviews have repeatedly shown the dangers of failing to take effective and immediate action. Examples of poor practice includes failing to act on and refer the early signs of abuse and neglect.

### **What school and college staff should do if they have a safeguarding concern or an allegation about another staff member who may pose a risk of harm to children**

20. If staff have a safeguarding concern or an allegation is made about another member of staff (including supply staff, contractors, volunteers, and visitors) harming or posing a risk of harm to children, they should speak to the principal or executive headteacher or principal (unless it relates to the principal or executive headteacher or principal, in which case they should speak to the chair of governors, chair of the management committee, or the proprietor of an independent school).

### **What school or college staff should do if they have concerns about safeguarding practices within the school or college**

21. All staff and volunteers should feel able to raise concerns about poor or unsafe practice and potential failures in the school's or college's safeguarding regime and know that such concerns will be taken seriously by the senior leadership team.

22. Appropriate whistleblowing procedures should be in place for concerns to be raised with the school's or college's senior leadership team.

23. Where staff feel unable to raise an issue with their employer or feel that their genuine safeguarding concerns are not being addressed [NSPCC whistleblowing advice line](#) is available. Staff can call 0800028 0285 – 8:00 AM to 8:00 PM, Monday to Friday and email: [help@nspcc.org.uk](mailto:help@nspcc.org.uk). Alternatively, staff can write to: National Society for the Prevention of Cruelty to Children (NSPCC), Weston House, 42 Curtain Road, London EC2A 3NH.

## Annex B: Further information

Annex B contains important additional information about specific forms of abuse and safeguarding issues. School and college leaders and those staff who work directly with children should read this Annex.

As per Part one of this guidance, if staff have any concerns about a child's welfare, they should act on them immediately. They should follow their own organisation's child protection policy and speak to the designated safeguarding lead (or a deputy).

**Where a child is suffering, or is likely to suffer from harm, it is important that a referral to local authority children's social care (and if appropriate the police) is made immediately.**

### Child abduction and community safety incidents

Child abduction is the unauthorised removal or retention of a minor from a parent or anyone with legal responsibility for the child. Child abduction can be committed by parents or other family members; by people known but not related to the victim (such as neighbours, friends and acquaintances); and by strangers.

Other community safety incidents in the vicinity of a school can raise concerns amongst children and parents, for example, people loitering nearby or unknown adults engaging children in conversation.

As children get older and are granted more independence (for example, as they start walking to school on their own) it is important they are given practical advice on how to keep themselves safe. Many schools provide outdoor-safety lessons run by teachers or by local police staff.

It is important that lessons focus on building children's confidence and abilities rather than simply warning them about all strangers. Further information is available at: [www.actionagainstabduction.org](http://www.actionagainstabduction.org) and [www.clevernevergoes.org](http://www.clevernevergoes.org).

### Child Criminal Exploitation (CCE) and Child Sexual Exploitation (CSE)

We know that different forms of harm often overlap, and that perpetrators may subject children and young people to multiple forms of abuse, such as criminal exploitation (including county lines) and sexual exploitation.

In some cases the exploitation or abuse will be in exchange for something the victim needs or wants (for example, money, gifts or affection), and/or will be to the financial benefit or other advantage, such as increased status, of the perpetrator or facilitator.

Children can be exploited by adult males or females, as individuals or in groups. They may also be exploited by other children, who themselves may be experiencing exploitation – where this is the case, it is important that the child perpetrator is also recognised as a victim.

Whilst the age of the child may be a contributing factor for an imbalance of power, there are a range of other factors that could make a child more vulnerable to exploitation, including, sexual identity, cognitive ability, learning difficulties, communication ability, physical strength, status, and access to economic or other resources.

Some of the following can be indicators of both child criminal and sexual exploitation where children:

- appear with unexplained gifts, money or new possessions
- associate with other children involved in exploitation
- suffer from changes in emotional well-being
- misuse alcohol and other drugs
- go missing for periods of time or regularly come home late, and
- regularly miss school or education or do not take part in education.

Children who have been exploited will need additional support to help keep them in education.

Child Sexual Exploitation (CSE) can be a one-off occurrence or a series of incidents over time and range from opportunistic to complex organised abuse. It can involve force and/or enticement-based methods of compliance and may, or may not, be accompanied by violence or threats of violence.

Some additional specific indicators that may be present in CSE are children who:

- have older boyfriends or girlfriends; and
- suffer from sexually transmitted infections, display sexual behaviours beyond expected sexual development or become pregnant.

Further information on signs of a child's involvement in sexual exploitation is available in Home Office guidance: [Child sexual exploitation: guide for practitioners](#)

## County lines

County lines is a term used to describe gangs and organised criminal networks involved in exporting illegal drugs using dedicated mobile phone lines or other form of "deal line". This activity can happen locally as well as across the UK - no specified distance of travel is required. Children and vulnerable adults are exploited to move, store and sell drugs and money. Offenders will often use coercion, intimidation, violence (including sexual violence) and weapons to ensure compliance of victims.

Children can be targeted and recruited into county lines in a number of locations including any type of schools (including special schools), further and higher educational institutions, pupil referral units, children's homes and care homes.

Children are also increasingly being targeted and recruited online using social media. Children can easily become trapped by this type of exploitation as county lines gangs can manufacture drug debts which need to be worked off or threaten serious violence and kidnap towards victims (and their families) if they attempt to leave the county lines network.

A number of the indicators for CSE and CCE as detailed above may be applicable to where children are involved in county lines. Some additional specific indicators that may be present where a child is criminally exploited through involvement in county lines are children who:

- go missing and are subsequently found in areas away from their home
- have been the victim or perpetrator of serious violence (e.g. knife crime)
- are involved in receiving requests for drugs via a phone line, moving drugs, handing over and collecting money for drugs
- are exposed to techniques such as ‘plugging’, where drugs are concealed internally to avoid detection
- are found in accommodation that they have no connection with, often called a ‘trap house or cuckooing’ or hotel room where there is drug activity
- owe a ‘debt bond’ to their exploiters
- have their bank accounts used to facilitate drug dealing.

Further information on the signs of a child’s involvement in county lines is available in guidance published by the [Home Office and The Children’s Society County Lines Toolkit For Professionals](#)

## Children and the court system

Children are sometimes required to give evidence in criminal courts, either for crimes committed against them or for crimes they have witnessed. There are two age appropriate guides to support children [5-11-year olds](#) and [12-17 year olds](#).

The guides explain each step of the process, support and special measures that are available. There are diagrams illustrating the courtroom structure and the use of video links is explained.

Making child arrangements via the family courts following separation can be stressful and entrench conflict in families. This can be stressful for children. The Ministry of Justice has launched an online [child arrangements information tool](#) with clear and concise information on the dispute resolution service. This may be useful for some parents and carers.

## Children who are absent from education

All staff should be aware that children being absent from school or college, particularly repeatedly and/or for prolonged periods, and children missing education can act as a vital warning sign of a range of safeguarding possibilities. This may include abuse and neglect such as sexual abuse or exploitation and can also be a sign of child criminal exploitation including involvement in county lines. It may indicate mental health problems, risk of substance abuse, risk of travelling to conflict zones, risk of female genital mutilation, so-called ‘honour’-based abuse or risk of forced marriage. Early intervention is essential to identify the existence of any underlying safeguarding risk and to help prevent the risks of a child going missing in future. It is important that staff are aware of their school’s or college’s unauthorised absence procedures and children missing education procedures.

## Children with family members in prison

Approximately 200,000 children in England and Wales have a parent sent to prison each year. These children are at risk of poor outcomes including poverty, stigma, isolation and poor mental health. The National Information Centre on Children of Offenders, [NICCO](#) provides information designed to support professionals working with offenders and their children, to help mitigate negative consequences for those children.

## Cybercrime

Cybercrime is criminal activity committed using computers and/or the internet. It is broadly categorised as either 'cyber-enabled' (crimes that can happen off-line but are enabled at scale and at speed on-line) or 'cyber dependent' (crimes that can be committed only by using a computer). Cyber-dependent crimes include:

- unauthorised access to computers (illegal 'hacking'), for example accessing a school's computer network to look for test paper answers or change grades awarded
- 'Denial of Service' (Dos or DDoS) attacks or 'booting'. These are attempts to make a computer, network or website unavailable by overwhelming it with internet traffic from multiple sources, and,
- making, supplying or obtaining malware (malicious software) such as viruses, spyware, ransomware, botnets and Remote Access Trojans with the intent to commit further offence, including those above.

Children with particular skills and interest in computing and technology may inadvertently or deliberately stray into cyber-dependent crime.

If there are concerns about a child in this area, the designated safeguarding lead (or a deputy), should consider referring into the **Cyber Choices** programme. This is a nationwide police programme supported by the Home Office and led by the National Crime Agency, working with regional and local policing. It aims to intervene where young people are at risk of committing, or being drawn into, low-level cyber-dependent offences and divert them to a more positive use of their skills and interests.

Note that **Cyber Choices** does not currently cover 'cyber-enabled' crime such as fraud, purchasing of illegal drugs on-line and child sexual abuse and exploitation, nor other areas of concern such as on-line bullying or general on-line safety.

Additional advice can be found at: [Cyber Choices](#), '[NPCC- When to call the Police](#)' and [National Cyber Security Centre - NCSC.GOV.UK](#).

## Domestic abuse

The Domestic Abuse Act 2021 received Royal Assent on 29 April 2021. The Act introduces the first ever statutory definition of domestic abuse and recognises the impact of domestic abuse on children, as victims in their own right, if they see, hear or experience the effects of abuse. The statutory definition of domestic abuse, based on the previous cross-government definition, ensures that different types of relationships are captured, including ex-partners and family members. The definition captures a range of different abusive behaviours, including physical, emotional and economic abuse and coercive and controlling behaviour. Under the statutory definition, both the person who is carrying out the behaviour and the person to whom the behaviour is directed towards must be aged 16 or over and they must be "personally connected" (as defined in section 2 of the 2021 Act).



Types of domestic abuse include intimate partner violence, abuse by family members, teenage relationship abuse and child to parent abuse. Anyone can be a victim of domestic abuse, regardless of sexual identity, age, ethnicity, socio-economic status, sexuality or background and domestic abuse can take place inside or outside of the home. The government has issued statutory guidance to provide further information for those working with domestic abuse victims and perpetrators, including the impact on children.

All children can witness and be adversely affected by domestic abuse in the context of their home life where domestic abuse occurs between family members. Experiencing domestic abuse can have a serious, long lasting emotional and psychological impact on children. In some cases, a child may blame themselves for the abuse or may have had to leave the family home as a result.

Young people can also experience domestic abuse within their own intimate relationships. This form of child-on-child abuse is sometimes referred to as 'teenage relationship abuse'. Depending on the age of the young people, this may not be recognised in law under the statutory definition of 'domestic abuse' (if one or both parties are under 16). However, as with any child under 18, where there are concerns about safety or welfare, child safeguarding procedures should be followed and both young victims and young perpetrators should be offered support.

## **Operation Encompass**

**Operation Encompass** operates in all police forces across England. It helps police and schools work together to provide emotional and practical help to children. The system ensures that when the police are called to an incident of domestic abuse, where there are children in the household who have experienced the domestic incident, the police will inform the key adult (usually the designated safeguarding lead (or a deputy)) in school before the child or children arrive at school the following day. This ensures that the school has up to date relevant information about the child's circumstances and can enable immediate support to be put in place, according to the child's needs. Operation Encompass does not replace statutory safeguarding procedures. Where appropriate, the police and/or schools should make a referral to local authority children's social care if they are concerned about a child's welfare. More information about the scheme and how schools can become involved is available on the Operation Encompass website.

Operation Encompass provides an advice and helpline service for all staff members from educational settings who may be concerned about children who have experienced domestic abuse. The helpline is available 8AM to 1PM, Monday to Friday on 0204 513 9990 (charged at local rate).

## **National Domestic Abuse Helpline**

Refuge runs the National Domestic Abuse Helpline, which can be called free of charge and in confidence, 24 hours a day on 0808 2000 247. Its website provides guidance and support for potential victims, as well as those who are worried about friends and loved ones. It also has a form through which a safe time from the team for a call can be booked.

Additional advice on identifying children who are affected by domestic abuse and how they can be helped is available at:

- [NSPCC- UK domestic-abuse Signs Symptoms Effects](#)

- [Refuge what is domestic violence/effects of domestic violence on children](#)
- [Safe Young Lives: Young people and domestic abuse | Safelives](#)
- [Domestic abuse: specialist sources of support](#) (includes information for adult victims, young people facing abuse in their own relationships and parents experiencing child to parent violence/abuse)
- [Home : Operation Encompass](#) (includes information for schools on the impact of domestic abuse on children)

## Homelessness

Being homeless or being at risk of becoming homeless presents a real risk to a child's welfare. The designated safeguarding lead (and any deputies) should be aware of contact details and referral routes into the Local Housing Authority so they can raise/progress concerns at the earliest opportunity. Indicators that a family may be at risk of homelessness include household debt, rent arrears, domestic abuse and anti-social behaviour, as well as the family being asked to leave a property. Whilst referrals and/or discussion with the Local Housing Authority should be progressed as appropriate, and in accordance with local procedures, this does not, and should not, replace a referral into local authority children's social care where a child has been harmed or is at risk of harm.

The Homelessness Reduction Act 2017 places a new legal duty on English councils so that everyone who is homeless or at risk of homelessness will have access to meaningful help including an assessment of their needs and circumstances, the development of a personalised housing plan, and work to help them retain their accommodation or find a new place to live. The following factsheets usefully summarise the new duties: [Homeless Reduction Act Factsheets](#). The new duties shift the focus to early intervention and encourages those at risk to seek support as soon as possible, before they are facing a homelessness crisis.

In most cases school and college staff will be considering homelessness in the context of children who live with their families, and intervention will be on that basis. However, it should also be recognised in some cases 16 and 17 year olds could be living independently from their parents or guardians, for example through their exclusion from the family home, and will require a different level of intervention and support. Local authority children's social care will be the lead agency for these children and the designated safeguarding lead (or a deputy) should ensure appropriate referrals are made based on the child's circumstances. The Department for Levelling Up, Housing and Communities have published joint statutory guidance on the provision of accommodation for 16 and 17 year olds who may be homeless and/or require accommodation: [here](#).

## Mental health

Where children have suffered abuse and neglect, or other potentially traumatic adverse childhood experiences, this can have a lasting impact throughout childhood, adolescence and into adulthood. It is key that staff are aware of how these children's experiences, can impact on their mental health, behaviour, attendance and progress at school.

More information can be found in the [Mental health and behaviour in schools guidance](#), colleges may also wish to follow this guidance as best practice. Public Health England<sup>146</sup> has produced a range of resources to support secondary school teachers to promote positive health, wellbeing and resilience among children. See [Every Mind Matters](#) for links to all materials and lesson plans.

## Modern Slavery and the National Referral Mechanism

Modern slavery encompasses human trafficking and slavery, servitude and forced or compulsory labour. Exploitation can take many forms, including sexual exploitation, forced labour, slavery, servitude, forced criminality and the removal of organs.

Further information on the signs that someone may be a victim of modern slavery, the support available to victims and how to refer them to the NRM is available in Statutory Guidance. [Modern slavery: how to identify and support victims - GOV.UK](#)

## Preventing radicalisation

Children may be susceptible to extremist ideology and radicalisation. Similar to protecting children from other forms of harms and abuse, protecting children from this risk should be a part of a schools or colleges safeguarding approach.

**Extremism**<sup>147</sup> is the vocal or active opposition to our fundamental values, including democracy, the rule of law, individual liberty and the mutual respect and tolerance of different faiths and beliefs. This also includes calling for the death of members of the armed forces.

**Radicalisation**<sup>148</sup> refers to the process by which a person comes to support terrorism and extremist ideologies associated with terrorist groups.

**Terrorism**<sup>149</sup> is an action that endangers or causes serious violence to a person/people; causes serious damage to property; or seriously interferes or disrupts an electronic system. The use or threat must be designed to influence the government or to intimidate the public and is made for the purpose of advancing a political, religious or ideological cause.

<sup>146</sup>Public Health England: has now been replaced by the UK Health Security Agency and the Office for Health Improvement and Disparities (OHID), which is part of the Department of Health and Social Care, and by the UK Health Security Agency. However, the branding remains unchanged.

<sup>147</sup> As defined in the Government's [Prevent Duty Guidance for England and Wales](#).

<sup>148</sup> As defined in the [Government's Prevent Duty Guidance for England and Wales](#). <sup>149</sup> As defined in the Terrorism Act 2000 (TACT 2000) <http://www.legislation.gov.uk/ukpga/2000/11/contents>

Although there is no single way of identifying whether a child is likely to be susceptible to an extremist ideology, there are [possible indicators](#) that should be taken into consideration alongside other factors and contexts. Background factors combined with specific influences such as family and friends may contribute to a child's vulnerability. Similarly, radicalisation can occur through many different methods (such as social media or the internet) and settings (such as within the home).

However, it is possible to protect people from extremist ideologies and intervene to prevent those at risk of radicalisation being drawn to terrorism. As with other safeguarding risks, staff should be alert to changes in children's behaviour, which could indicate that they may be in need of help or protection. Staff should use their judgement in identifying children who might be at risk of radicalisation and act proportionately which may include the designated safeguarding lead (or a deputy) [making a Prevent referral](#).

Although not a cause for concern on their own, possible indicators when taken into consideration alongside other factors or context may be a sign of being radicalised.

## The Prevent duty

All schools and colleges are subject to a duty under section 26 of the Counter-Terrorism and Security Act 2015 (the CTSA 2015), in the exercise of their functions, to have “due regard<sup>150</sup> to the need to prevent people from being drawn into terrorism”.<sup>151</sup> This duty is known as the Prevent duty.

The Prevent duty should be seen as part of schools’ and colleges’ wider safeguarding obligations. Designated safeguarding leads (and deputies) and other senior leaders in schools should familiarise themselves with the revised [Prevent duty guidance: for England and Wales](#), especially paragraphs 57-76, which are specifically concerned with schools (and also covers childcare). Designated safeguarding leads (and deputies) and other senior leaders in colleges should familiarise themselves with the [Prevent duty guidance: for further education institutions in England and Wales](#). The guidance is set out in terms of four general themes: risk assessment, working in partnership, staff training, and IT policies.

The school’s or college’s designated safeguarding lead (and any deputies) should be aware of local procedures for making a Prevent referral.

<sup>150</sup> According to the Prevent duty guidance ‘having due regard’ means that the authorities should place an appropriate amount of weight on the need to prevent people being drawn into terrorism when they consider all the other factors relevant to how they carry out their usual functions.

<sup>151</sup> “Terrorism” for these purposes has the same meaning as for the Terrorism Act 2000 (section 1(1) to (4) of that Act).

## Channel

Channel is a voluntary, confidential support programme which focuses on providing support at an early stage to people who are identified as being susceptible to being drawn into terrorism. Prevent referrals are assessed and may be passed to a multi- agency Channel panel, which will discuss the individual referred to determine whether they are at risk of being drawn into terrorism and consider the appropriate support required. A representative from the school or college may be asked to attend the Channel panel to help with this assessment. An individual will be required to provide their consent before any support delivered through the programme is provided.

The designated safeguarding lead (or a deputy) should consider if it would be appropriate to share any information with the new school or college in advance of a child leaving. For example, information that would allow the new school or college to continue supporting victims of abuse or those who are currently receiving support through the ‘Channel’ programme and have that support in place for when the child arrives.

Statutory guidance on Channel is available at: [Channel guidance](#).

## Additional support

[The Department has published further advice for those working in education settings with safeguarding responsibilities on the Prevent duty](#). The advice is intended to complement the Prevent guidance and signposts to other sources of advice and support.

The Home Office has developed three e-learning modules:

- [Prevent awareness e-learning](#) offers an introduction to the Prevent duty.

- [Prevent referrals e-learning](#) supports staff to make Prevent referrals that are **robust, informed** and with **good intention**.
- [Channel awareness e-learning](#) is aimed at staff who may be asked to contribute to or sit on a multi-agency Channel panel.

[Educate Against Hate](#), is a government website designed to support school and college teachers and leaders to help them safeguard their students from radicalisation and extremism. The platform provides free information and resources to help staff identify and address the risks, as well as build resilience to radicalisation.

For advice specific to further education, the Education and Training Foundation (ETF) hosts the [Prevent for FE and Training](#). This hosts a range of free, sector specific resources to support further education settings to comply with the Prevent duty. This includes the Prevent Awareness e-learning, which offers an introduction to the duty, and the Prevent Referral e-learning, which is designed to support staff to make robust, informed and proportionate referrals.

The [ETF Online Learning environment](#) provides online training modules for practitioners, leaders and managers, to support staff and governors/Board members in outlining their roles and responsibilities under the duty.

London Grid for Learning have also produced useful resources on Prevent ([Online Safety Resource Centre - London Grid for Learning \(lgfl.net\)](#)).

## Sexual violence and sexual harassment between children in schools and colleges

Sexual violence and sexual harassment can occur between two children of any age and sex from primary to secondary stage and into colleges. It can also occur online. It can also occur through a group of children sexually assaulting or sexually harassing a single child or group of children.

Children who are victims of sexual violence and sexual harassment will likely find the experience stressful and distressing. This will, in all likelihood, adversely affect their educational attainment and will be exacerbated if the alleged perpetrator(s) attends the same school or college. Sexual violence and sexual harassment exist on a continuum and may overlap, they can occur online and face to face (both physically and verbally) and are never acceptable.

It is essential that **all** victims are reassured that they are being taken seriously and that they will be supported and kept safe. A victim should never be given the impression that they are creating a problem by reporting sexual violence or sexual harassment. Nor should a victim ever be made to feel ashamed for making a report. Detailed advice is available in Part five of this guidance.

## Serious Violence

There are a number of indicators, which may signal children are at risk from, or are involved with, serious violent crime. These may include:

- increased absence from school
- a change in friendships or relationships with older individuals or groups

- a significant decline in performance
- signs of self-harm or a significant change in wellbeing, or signs of assault or unexplained injuries
- unexplained gifts or new possessions could also indicate that children have been approached by, or are involved with, individuals associated with criminal networks or gangs and may be at risk of criminal exploitation.

The likelihood of involvement in serious violence may be increased by factors such as:

- being male
- having been frequently absent or permanently excluded from school
- having experienced child maltreatment and having been involved in offending, such as theft or robbery.

A fuller list of risk factors can be found in the Home Office's [Serious Violence Strategy](#).

Professionals should also be aware that violence can often peak in the hours just before or just after school, when pupils are travelling to and from school. These times can be particularly risky for young people involved in serious violence.

Advice for schools and colleges is provided in the Home Office's [Criminal exploitation of children and vulnerable adults: county lines](#) guidance. The [Youth Endowment Fund \(YEF\) Toolkit](#) sets out the evidence for what works in preventing young people from becoming involved in violence.

Home Office funded Violence Reduction Units (VRU) operate in the 20 police force areas across England and Wales that have the highest volumes of serious violence, as measured by hospital admissions for injury with a sharp object. A list of these locations can be found [here](#). As the strategic co-ordinators for local violence prevention, each VRU is mandated to include at least one local education representative within their Core Membership group, which is responsible for setting the direction for VRU activity. Schools and educational partners within these areas are encouraged to reach out to their local VRU, either directly or via their education Core Member, to better ingrain partnership working to tackle serious violence across local areas and ensure a joined up approach to young people across the risk spectrum.

The Police, Crime, Sentencing and Courts Act will introduce early in 2023 a new duty on a range of specified authorities, such as the police, local government, youth offending teams, health and probation services, to work collaboratively, share data and information, and put in place plans to prevent and reduce serious violence within their local communities. Educational authorities and prisons/youth custody authorities will be under a separate duty to co-operate with core duty holders when asked, and there will be a requirement for the partnership to consult with all such institutions in their area.

The Duty is not intended to replace or duplicate existing safeguarding duties. Local partners may choose to meet the requirements of the Duty through existing multi-agency structures, such as multi-agency safeguarding arrangements, providing the correct set of partners are involved.

## **So-called 'honour'-based abuse (including Female Genital Mutilation and Forced Marriage)**

So-called 'honour'-based abuse (HBA) encompasses incidents or crimes which have been committed to protect or defend the honour of the family and/or the community, including female genital mutilation (FGM), forced marriage, and practices such as breast ironing. Abuse committed in the context of preserving 'honour' often involves a wider network of family or community pressure and can include multiple perpetrators. It is important to be aware of this dynamic and additional risk factors when deciding what form of safeguarding action to take. All forms of HBA are abuse (regardless of the motivation) and should be handled and escalated as such. Professionals in all agencies, and individuals and groups in relevant communities, need to be alert to the possibility of a child being at risk of HBA, or already having suffered HBA.

## Actions

If staff have a concern regarding a child who might be at risk of HBA or who has suffered from HBA, they should speak to the designated safeguarding lead (or a deputy). As appropriate, the designated safeguarding lead (or a deputy) will activate local safeguarding procedures, using existing national and local protocols for multi-agency liaison with the police and local authority children's social care. Where FGM has taken place, since 31 October 2015 there has been a mandatory reporting duty placed on **teachers**<sup>152</sup> that requires a different approach (see below).

## FGM

FGM comprises all procedures involving partial or total removal of the external female genitalia or other injury to the female genital organs. It is illegal in the UK and a form of child abuse with long-lasting harmful consequences.

### FGM mandatory reporting duty for teachers

Section 5B of the Female Genital Mutilation Act 2003 (as inserted by section 74 of the Serious Crime Act 2015) places a statutory duty upon **teachers**, along with regulated health and social care professionals in England and Wales, to report to the police where they discover (either through disclosure by the victim or visual evidence) that FGM appears to have been carried out on a girl under 18. Those failing to report such cases may face disciplinary sanctions. It will be rare for teachers to see visual evidence, and they should **not** be examining pupils or students, but the same definition of what is meant by "to discover that an act of FGM appears to have been carried out" is used for all professionals to whom this mandatory reporting duty applies. Information on when and how to make a report can be found at: [Mandatory reporting of female genital mutilation procedural information](#).

<sup>152</sup> Under Section 5B(1)(a) of the Female Genital Mutilation Act 2003, "teacher" means, in relation to England, a person within section 141A(1) of the Education Act 2002 (persons employed or engaged to carry out teaching work at schools and other institutions in England).

Teachers **must** personally report to the police cases where they discover that an act of FGM appears to have been carried out.<sup>153</sup> Unless the teacher has good reason not to, they should still consider and discuss any such case with the school's or college's designated safeguarding lead (or a deputy) and involve local authority children's social care as appropriate. The duty does not apply in relation to at risk or suspected cases (i.e. where the teacher does not discover that an act of FGM appears to have been carried out, either through disclosure by the victim or visual evidence) or in cases where the woman is 18 or

over. In these cases, teachers should follow local safeguarding procedures. The following is a useful summary of the FGM mandatory reporting duty: [FGM Fact Sheet](#).

Further information can be found in the [Multi-agency statutory guidance on female genital mutilation](#) and the [FGM resource pack](#) particularly section 13.

## **Forced marriage**

Forcing a person into a marriage is a crime in England and Wales. A forced marriage is one entered into without the full and free consent of one or both parties and where violence, threats or any other form of coercion is used to cause a person to enter into a marriage. Threats can be physical or emotional and psychological. A lack of full and free consent can be where a person does not consent or where they cannot consent (if they have learning disabilities, for example). Nevertheless, some perpetrators use perceived cultural practices to coerce a person into marriage. Schools and colleges can play an important role in safeguarding children from forced marriage.

The Forced Marriage Unit (FMU) has created: Multi-agency practice guidelines: handling cases of forced marriage (pages 75-80 of which focus on the role of schools and colleges) and, Multi-agency statutory guidance for dealing with forced marriage, which can both be found at [The right to choose: government guidance on forced marriage - GOV.UK \(www.gov.uk\)](#) School and college staff can contact the Forced Marriage Unit if they need advice or information: Contact: 020 7008 0151 or email [fmufcdo.gov.uk](mailto:fmufcdo.gov.uk).

In addition, since February 2023 it has also been a crime to carry out any conduct whose purpose is to cause a child to marry before their eighteenth birthday, even if violence, threats or another form of coercion are not used. As with the existing forced marriage law, this applies to non-binding, unofficial 'marriages' as well as legal marriages.

## **Additional advice and support**

There is a wealth of information available to support schools and colleges. The following list is not exhaustive but should provide a useful starting point:

### **Abuse**

[Supporting practice in tackling child sexual abuse - CSA Centre](#) Centre of Expertise on Child Sexual Abuse has free evidence-based practice resources to help professionals working with children and young people to identify and respond appropriately to concerns of child sexual abuse.

[What to do if you're worried a child is being abused](#) – DfE advice [Domestic abuse: Various Information/Guidance](#) - Home Office (HO) [Faith based abuse: National Action Plan](#) - DfE advice

[Forced marriage resource pack](#)

[Disrespect NoBody campaign - GOV.UK](#) - Home Office website [Tackling Child Sexual Abuse Strategy](#) – Home Office policy paper [Together we can stop child sexual abuse](#) – HM Government campaign



## **Bullying**

[Preventing bullying including cyberbullying](#) - DfE advice **Children missing from education, home or care**

[Children missing education](#) - DfE statutory guidance

[Child missing from home or care](#) - DfE statutory guidance [Children and adults missing strategy](#) - Home Office strategy

## **Children with family members in prison**

[National Information Centre on Children of Offenders](#) - Barnardo's in partnership with HM Prison and Probation Service

## **Child Exploitation**

[Trafficking: safeguarding children](#) - DfE and Home Office guidance 156

[Care of unaccompanied and trafficked children](#) – DfE statutory guidance

[Modern slavery: how to identify and support victims](#) – HO statutory guidance

[Child exploitation disruption toolkit](#) - HO statutory guidance

[County Lines Toolkit For Professionals](#) - The Children's Society in partnership with Victim Support and National Police Chiefs' Council

[Multi-agency practice principles for responding to child exploitation and extra-familial harm](#) – non-statutory guidance for local areas, developed by the Tackling Child Exploitation (TCE) Support Programme, funded by the Department for Education and supported by the Home Office, the Department for Health and Social Care and the Ministry of Justice

## **Confidentiality**

[Gillick competency Fraser guidelines](#) - Guidelines to help with balancing children's rights along with safeguarding responsibilities.

## **Drugs**

[Drug strategy 2021](#) - Home Office strategy

[Information and advice on drugs](#) - Talk to Frank website

[Drug and Alcohol education — teacher guidance & evidence review](#) – PSHE Association

## **(So-called) “Honour Based Abuse” including FGM and forced marriage**

[Female genital mutilation: information and resources](#)- Home Office guidance

[Female genital mutilation: multi agency statutory guidance](#) - DfE, Department for Health,

and Home Office

[Forced marriage](#) - Forced Marriage Unit (FMU) resources

[Forced marriage](#) - Government multi-agency practice guidelines and multi-agency statutory guidance

[FGM resource pack](#) – HM Government guidance **Health and Well-being**

[Rise Above: Free PSHE resources on health, wellbeing and resilience](#) - Public Health England

[Supporting pupils at schools with medical conditions](#) - DfE statutory guidance **Mental health and behaviour in schools** - DfE advice

[Overview - Fabricated or induced illness](#) - NHS advice **Homelessness**

[Homelessness code of guidance for local authorities](#) – Department for Levelling Up, Housing and Communities guidance

### **Information Sharing**

[Government information sharing advice](#) - Guidance on information sharing for people who provide safeguarding services to children, young people, parents and carers.

[Information Commissioner's Office: Data sharing information hub](#) - Information to help schools and colleges comply with UK data protection legislation including UK GDPR.

### **Online safety-advice**

[Childnet](#) provide guidance for schools on cyberbullying  
[Educateagainsthate](#) provides practical advice and support on protecting children from extremism and radicalisation

[London Grid for Learning](#) provides advice on all aspects of a school or college's online safety arrangements

[NSPCC E-safety for schools](#) provides advice, templates, and tools on all aspects of a school or college's online safety arrangements

[Safer recruitment consortium](#) “guidance for safe working practice”, which may help ensure staff behaviour policies are robust and effective

[Searching screening and confiscation](#) is departmental advice for schools on searching children and confiscating items such as mobile phones

[South West Grid for Learning](#) provides advice on all aspects of a school or college's online safety arrangements

[Use of social media for online radicalisation](#) - A briefing note for schools on how social media is used to encourage travel to Syria and Iraq

[Online Safety Audit Tool](#) from UK Council for Internet Safety to help mentors of trainee teachers and newly qualified teachers induct mentees and provide ongoing support, development and monitoring

[Online safety guidance if you own or manage an online platform](#) DCMS advice [A business guide for protecting children on your online platform](#) DCMS advice

[UK Safer Internet Centre](#) provide tips, advice, guides and other resources to help keep children safe online

### **Online safety- Remote education, virtual lessons and live streaming**

[Guidance Get help with remote education](#) resources and support for teachers and school leaders on educating pupils and students

[Departmental guidance on safeguarding and remote education](#) including planning remote education strategies and teaching remotely

[London Grid for Learning](#) guidance, including platform specific advice

[National cyber security centre](#) guidance on choosing, configuring and deploying video

conferencing

[UK Safer Internet Centre](#) guidance on safe remote learning

### **Online Safety- Support for children**

[Childline](#) for free and confidential advice

[UK Safer Internet Centre](#) to report and remove harmful online content [CEOP](#) for advice on making a report about online abuse

### **Online safety- Parental support**

[Childnet](#) offers a toolkit to support parents and carers of children of any age to start discussions about their online life, and to find out where to get more help and support

[Commonsensemedia](#) provide independent reviews, age ratings, & other information about all types of media for children and their parents

[Government advice](#) about protecting children from specific online harms such as child sexual abuse, sexting, and cyberbullying

[Internet Matters](#) provide age-specific online safety checklists, guides on how to set parental controls, and practical tips to help children get the most out of their digital world

[How Can I Help My Child?](#) Marie Collins Foundation – Sexual Abuse Online

[Let's Talk About It](#) provides advice for parents and carers to keep children safe from

online radicalisation

[London Grid for Learning](#) provides support for parents and carers to keep their children safe online, including tips to keep primary aged children safe online

[Stopitnow](#) resource from [The Lucy Faithfull Foundation](#) can be used by parents and carers who are concerned about someone's behaviour, including children who may be displaying concerning sexual behaviour (not just about online)

[National Crime Agency/CEOP Thinkuknow](#) provides support for parents and carers to keep their children safe online

[Parentzone](#) provides help for parents and carers on how to keep their children safe online

[Talking to your child about online sexual harassment: A guide for parents](#) – This is the Children’s Commissioner’s parental guide on talking to their children about online sexual harassment

## **Private fostering**

[Private fostering: local authorities](#) - DfE statutory guidance **Radicalisation**

[Prevent duty guidance](#)- Home Office guidance

[Prevent duty: additional advice for schools and childcare providers](#) - DfE advice

[Educate Against Hate website](#) - DfE and Home Office advice

[Prevent for FE and Training](#) - Education and Training Foundation (ETF)

[Extremism and Radicalisation Safeguarding Resources](#) – Resources by London Grid for Learning

[Managing risk of radicalisation in your education setting](#) – DfE guidance **Serious Violence**

[Serious violence strategy](#) - Home Office Strategy

[Factors linked to serious violence and how these factors can be used to identify](#)

[individuals for intervention](#) – Home Office

[Youth Endowment Fund](#) – Home Office

[Gangs and youth violence: for schools and colleges](#) - Home Office advice

[Tackling violence against women and girls strategy](#)- Home Office strategy

[Violence against women and girls: national statement of expectations for victims](#) - Home Office guidance

## **Sexual violence and sexual harassment Specialist Organisations**

[Barnardo's](#) - UK charity caring for and supporting some of the most vulnerable children and young people through their range of services.

[Lucy Faithful Foundation](#) - UK-wide child protection charity dedicated to preventing child sexual abuse. They work with families affected by sexual abuse and also run the confidential Stop it Now! Helpline.

[Marie Collins Foundation](#) – Charity that, amongst other things, works directly with children, young people, and families to enable their recovery following sexual abuse.

[NSPCC](#) - Children's charity specialising in child protection with statutory powers enabling them to take action and safeguard children at risk of abuse.

[Rape Crisis](#) - National charity and the umbrella body for their network of independent member Rape Crisis Centres.

[UK Safer Internet Centre](#) - Provides advice and support to children, young people, parents, carers and schools about staying safe online.

### **Harmful sexual behaviour**

[Rape Crisis \(England & Wales\)](#) or [The Survivors Trust](#) for information, advice, and details of local specialist sexual violence organisations.

[NICE guidance](#) contains information on, amongst other things: developing interventions; working with families and carers; and multi-agency working.

[HSB toolkit](#) The Lucy Faithfull Foundation - designed for parents, carers, family members and professionals, to help everyone play their part in keeping children safe. It has links to useful information, resources, and support as well as practical tips to prevent harmful sexual behaviour and provide safe environments for families.

[NSPCC Learning: Protecting children from harmful sexual behaviour](#) and [NSPCC - Harmful sexual behaviour framework](#)- free and independent advice about HSB.

[Contextual Safeguarding Network – Beyond Referrals \(Schools\)](#) provides a school self-assessment toolkit and guidance for addressing HSB in schools.

[Preventing harmful sexual behaviour in children - Stop It Now](#) provides a guide for parents, carers and professionals to help everyone do their part in keeping children safe, they also run a free confidential helpline.

### **Support for Victims**

[Anti-Bullying Alliance](#) - Detailed information for anyone being bullied, along with advice for parents and schools. Signposts to various helplines and websites for further support.

[Rape Crisis](#) - Provide and signpost to a range of services to support people who have experienced rape, child abuse or any kind of sexual violence.

[The Survivors Trust](#)- UK-wide national umbrella agency with resources and support dedicated to survivors of rape, sexual violence and child sex abuse.

[Victim Support](#) - Supporting children and young people who have been affected by crime. Also provides support to parents and professionals who work with children and young people – regardless of whether a crime has been reported or how long ago it was.

[Childline](#) provides free and confidential advice for children and young people.

### **Toolkits**

[ask AVA](#) - The Ask AVA prevention platform has been created to support education practitioners across the UK to develop and deliver a comprehensive programme to stop Violence Against Women and Girls.

[NSPCC](#) - Online Self-assessment tool to ensure organisations are doing everything they can to safeguard children.

[NSPCC](#) - Resources which help adults respond to children disclosing abuse. NSPCC also provides free and independent advice about HSB: [NSPCC - Harmful sexual behaviour framework](#)

[Safeguarding Unit, Farrer and Co. and Carlene Firmin, MBE, University of Bedfordshire](#) - Peer-on-Peer Abuse toolkit provides practical guidance for schools on how to prevent, identify early and respond appropriately to peer-on-peer abuse.

[Contextual Safeguarding Network](#) – self-assessment toolkit for schools to assess their own response to HSB.

[Childnet - STAR SEND Toolkit](#) equips, enables and empowers educators with the knowledge to support young people with special educational needs and disabilities.

[Childnet - Just a joke?](#) provides lesson plans, activities, a quiz and teaching guide designed to explore problematic online sexual behaviour with 9-12 year olds.

[Childnet - Step Up, Speak Up](#) a practical campaign toolkit that addresses the issue of online sexual harassment amongst young people aged 13-17 years old.

[NSPCC - Harmful sexual behaviour framework](#) an evidence-informed framework for children and young people displaying HSB.

[Contextual Safeguarding Network – Beyond Referrals - Schools](#) leavers for addressing HSB in schools.

Farrer & Co: [Addressing child on child abuse: a resource for schools and colleges](#). This resource provides practical guidance for schools and colleges on how to prevent, identify early and respond appropriately to child-on-child abuse.

## **Sharing nudes and semi-nudes**

[London Grid for Learning-collection of advice](#) - Various information and resources dealing with the sharing of nudes and semi-nudes.

[UKCIS Sharing nudes and semi-nudes: advice for education settings working with children and young people](#) - Advice for schools and colleges on responding to incidents of non-consensual sharing of nudes and semi-nudes.

## **Support for parents/carers**

National Crime Agency's [CEOP Education Programme](#) provides information for parents and carers to help protect their child from online child sexual abuse, including [#AskTheAwkward](#), guidance on how to talk to their children about online relationships

