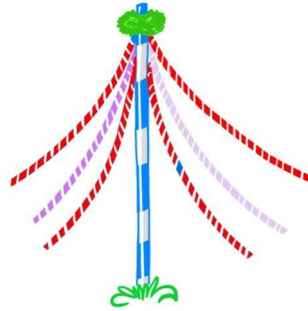


Maypole School



PREVENT DUTY SUMMARY

September 2023

Drafted by:	John Herring	
Authorised by:	Adrienne Cherrywood	05 Sep 22
Publication Date:		05 Sep 22
Reviewed:		21 July 23
Next Review due:		01 Aug 24

1. WHAT IS THE “PREVENT” DUTY?

The Prevent duty requires all schools to "have due regard to the need to prevent people being drawn into terrorism", under the Counter-Terrorism and Security Act 2015. The duty covers all types of extremism, whether political, religious or ideological.

2. WHAT WE ARE REQUIRED TO DO

Maypole School needs to protect pupils from the risk of radicalisation, as part of our wider safeguarding duties, and also our duty to promote the spiritual, moral, social and cultural development of pupils.

The actions that are required

To do this, we should take the following actions.

- Promote the fundamental British values in our curriculum.
- Make sure our school is a safe space for pupils to discuss sensitive topics, including terrorism and extremism.
- Ensure we have robust safeguarding procedures, to identify children at risk.
- Engage with our Local Authorities' (LAs') risk assessments, to determine the potential risk of individuals being drawn into terrorism in our local area.
- Make sure we have measures in place to protect pupils from harmful online content, including setting up appropriate filtering systems.
- Make sure staff receive training to help them identify pupils at risk, challenge extremist ideas, and know how to act if they have a concern.

Mandatory Training Requirements

The Designated Safeguarding Lead (DSL) must have Prevent awareness training.

In addition, all staff will undertake an [e-learning course](#) on Preventing Radicalisation, as part of their induction programme; and then annually as part of the school's mandatory training programme.

3. WHAT YOU SHOULD DO IF YOU HAVE A CONCERN

If you have a concern then you should follow Maypole School's usual safeguarding procedures. You should discuss your concern with the DSL, who will decide whether to involve other agencies such as the LA, police, social services, or Channel, which is the Government's programme for identifying and supporting those at risk of being drawn into terrorism.