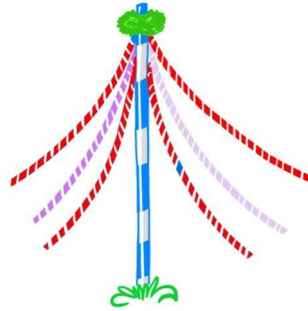


Maypole School



ENGLISH AS A SECOND LANGUAGE POLICY

September 2023

Drafted by:	Adrienne Cherrywood	
Authorised by:	Adrienne Cherrywood	05 Sep 22
Publication Date:		05 Sep 22
Reviewed:	Adrienne Cherrywood	11 July 23
Next Review due:		01 Aug 24

CONTENTS

1. INTRODUCTION	3
2. AIMS	3
3. IDENTIFICATION, ASSESSMENT AND REVIEW ARRANGEMENTS	3
<ul style="list-style-type: none">● Initial assessment and support● Integration● How we will support the development of English● Ensuring access to the curriculum and to assessment	
4. PARTNERSHIPS	4
<ul style="list-style-type: none">● With Parents / Carers● With other Schools and Agencies	
5. GUIDANCE AND RESOURCES	4

1. INTRODUCTION

This document identifies the strategies and provision for pupils attending Maypole School who have English as an Additional Language (EAL). Maypole School is committed to equality of opportunity for all including those for whom English is not their first language.

2. AIMS

Our aim is to provide a programme of support which will enable pupils with EAL to receive the help they need to access the curriculum. In doing this we will liaise with parents / carers, working in partnership with them to facilitate progress.

3. IDENTIFICATION, ASSESSMENT AND REVIEW ARRANGEMENTS

Initial assessment and support

Pupils whose first language is not English are assessed on entering the school. Maypole School has strong staff to pupil ratios, and where necessary an additional teaching assistant will be responsible for providing initial support, and more specialist provision may be provided or overseen by a suitably qualified teacher. Pupils will be monitored to ensure continued progress.

Integration

Pupils will be immersed in the activities of their class group, and will work with their peers to encourage the acquisition of language, with additional support from a teaching assistant or qualified teacher as appropriate.

How we will support the development of English

Where appropriate, teachers will take action to help children who are learning English as an additional language by various means, developing their spoken and written English by:

- ensuring that vocabulary work covers the technical as well as the everyday meaning of key words, metaphors and idioms
- displaying key vocabulary
- explaining how speaking and writing in English are structured for different purposes across a range of subjects
- providing a range of reading materials that highlight the different ways in which English is used
- ensuring that there are effective opportunities for talking, and that talking is used to support writing
- encouraging children to transfer their knowledge, skills and understanding of one language to another
- building on children's experiences of language at home and in the wider community, so that their developing uses of English and other languages support one another.

Ensuring access to the curriculum and to assessment

Access to the curriculum and to assessment is ensured by:

- using accessible texts and materials that suit children's ages and levels of learning;
- providing support through ICT, video or audio materials, dictionaries and translators, readers and scribes;
- using the home or first language where appropriate;
- setting targets in literacy for individual children.

4. PARTNERSHIPS

With Parents / Carers

We recognise the importance of effective dialogue between teachers, parents/carers and outside agencies. Parents/carers are kept informed of their child's progress at every stage.

Parents/carers who are concerned about their child's progress should in the first instance speak to the Head Teacher/Principal.

With other Schools and Agencies

Where necessary EAL Specialists, from other schools or from external agencies, will be invited to provide support through training or visits, to maximise progress.

5. GUIDANCE AND RESOURCES

The following guidance and resources are relevant to this policy.

<https://www.gov.uk/government/publications/aiming-high-meeting-the-needs-of-newly-arrived-learners-of-english-as-an-additional-language>

<https://www.gov.uk/government/publications/developing-quality-tuition-effective-practice-in-schools-english-as-an-additional-language>

<https://www.gov.uk/government/publications/learning-and-teaching-for-bilingual-children-in-the-primary-years-guided-sessions-to-support-writing-english-as-an-additional-language>

<https://www.gov.uk/government/publications/helping-children-and-families-use-english-as-an-additional-language>

<http://socialsolihull.org.uk/schools/sab/wp-content/uploads/2016/07/EAL-Learner-Overview-Docx-with-DFE-Descriptors.pdf>

<https://www.gov.uk/government/publications/attainment-of-pupils-with-english-as-an-additional-language>

https://assets.publishing.service.gov.uk/government/uploads/system/uploads/attachment_data/file/183945/developing_quality_tuition_-_english_as_an_additional_language.pdf